



CATALOG & PRICE LIST

TABLE BASES & ACCESSORIES

Effective January 15, 2026

special 

PRICING & FREIGHT NOTIFICATIONS

Pricing Disclaimer

Although the information in this Price List is presented in good faith and believed to be correct at the time of publication, Special-T has no liability for any errors or omissions. Also, please note that all prices are subject to change.

Special-T shall have the right to refuse or cancel any order placed for a product listed at the incorrect price. If an item's correct price is lower than our stated price, we will charge the lower amount and ship the item.

If an item's correct price is higher than our stated price, we will notify the price error for review and extend an opportunity to purchase the item at the correct price.

Freight Notifications

Freight Fee Table Bases

Prepaid & add, FOB Origin, Alpharetta, GA; dock to dock delivery

Electric Height Adjustable Bases Only: Patriot, Liberty, and Hike

QTY: 1 - 3 \$55 each | 4-15 \$33 each | 16 - 50 \$27 each | 51 + \$16 each

FOB: Alpharetta, GA; PPD & ADD | Dock-to-Dock delivery.

Shipments Outside Continental U.S.

Qualified Freight Prepaid orders with final destination outside Continental U.S. will ship to the Freight Forwarder or Port of Embarkation within the 48 contiguous states. Shipments from Freight Forwarder/Port of Embarkation will ship FOB: Origin to final destination.

Oversize Fee

All LTL shipments for pallets 8' and over

96"-108" - additional \$250.00

109"-168" - additional \$350.00

Per custom pallet



TABLE BASES & ACCESSORIES

CATALOG

For over twenty years, Special-T has led the industry in manufacturing the widest selection of tables and accessories. Our customers—ranging from office furniture dealers to table manufacturers and re-manufacturers—trust us for high-demand, competitively priced products that consistently exceed quality expectations. We pride ourselves on timely, damage-free deliveries and attribute our success to exceptional customer service, superior craftsmanship, and a user-friendly online configurator at www.SpecialT.net.

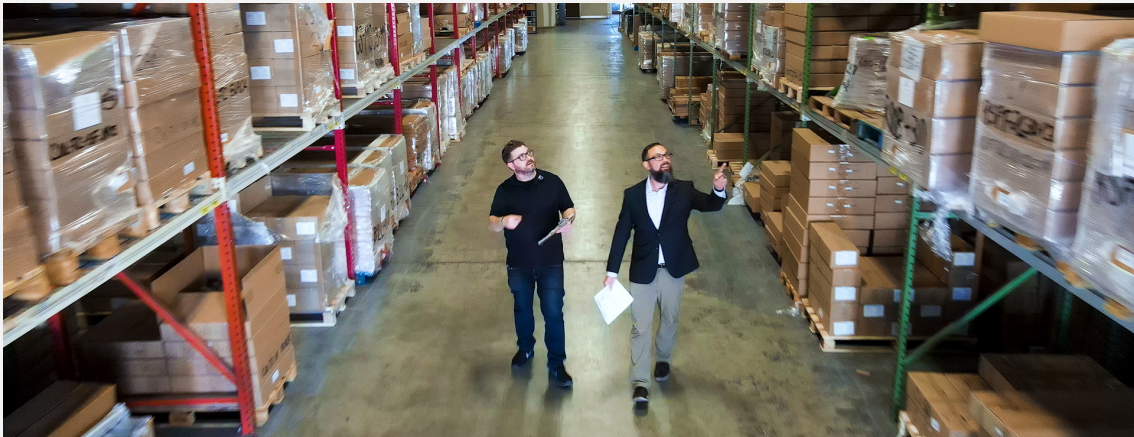
PURPOSE STATEMENT

Our goal is to develop long-term, mutually beneficial relationships using the highest level of values, ethics, and unique products.

Let us help you by:

- Putting profit back into your projects
- Solving problems with creative solutions
- Utilizing 'A' Grade tables and bases

PRODUCT IN STOCK READY TO SHIP | ENDLESS OPTIONS



SAME DAY SHIPPING

24-hour turn-around time | Over 300,000 bases in stock
You're never late on quick turn-around projects



SPECIAL-T'S CUSTOMER SERVICE TEAM IS WAITING FOR YOUR CALL

- Personal attention
- Honesty, integrity
- We follow through
- We do what we promise



MORE CHOICES AND CUSTOMIZATION OPTIONS

- Highest quality powder-coating finishes
- 20 standard industry colors
- Stainless Steel & Cast Iron (on some models)
- Custom heights

CONFIGURE & PRICE ONLINE

Specify quotes and purchase in a matter of just minutes. Special-T's proprietary configurator software is one of the first to be introduced into the office furniture industry. An easy-to-use interface walks the user through the various stages of the table specifying process, allowing them to customize any of Special-T's products in a simple, quick, and error-free manner.

- Visit SpecialT.net
- Go to the "Bases and Accessories" tab
- Apply filters to select the desired base and options
- Call (888) 705-0777 with any questions

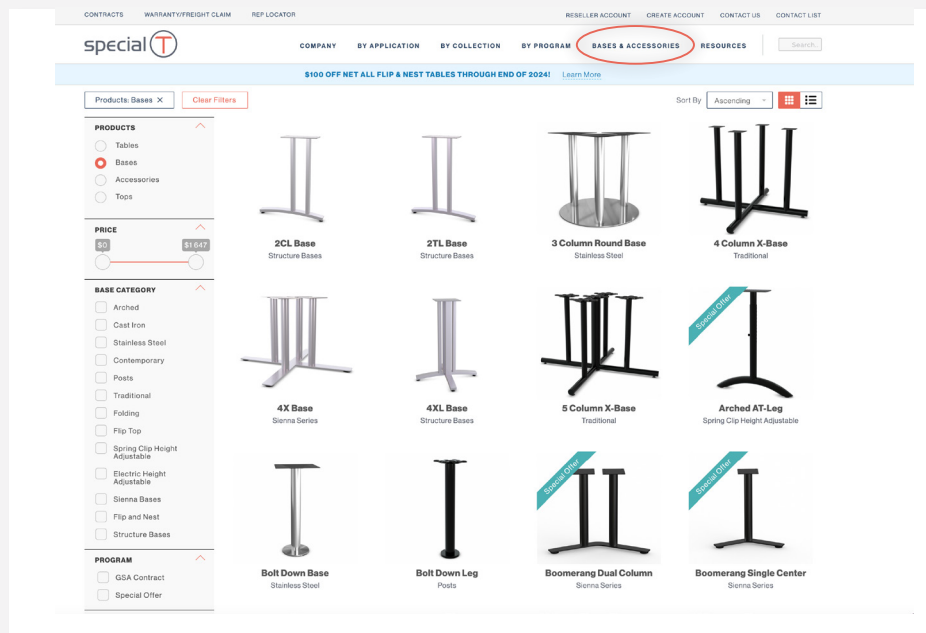




TABLE BASES & ACCESSORIES

CATALOG & PRICE LIST

Effective January 15, 2026

TABLE OF CONTENTS

STAINLESS STEEL

| | |
|------------------------------------|----|
| Stainless Steel Round Base..... | 08 |
| Stainless Steel Square Base..... | 09 |
| Stainless Steel Bolt Down Leg..... | 10 |
| Stainless Steel Post Leg..... | 11 |

CAST IRON

| | |
|-----------------------------|----|
| Cast Iron X & T Bases | 12 |
| Cast Iron Round Bases | 14 |

POSTS

| | |
|-------------------------------|----|
| Single Column Post Legs | 16 |
| Square Post Legs..... | 17 |
| Reveal Leg | 18 |
| Bolt Down Leg | 19 |

TRADITIONAL

| | |
|----------------------------------|----|
| Single Column T-Leg | 20 |
| Welded Single Column T-Leg | 23 |
| EZ-Roll T-Leg..... | 24 |
| Dual Column T-Leg..... | 25 |
| Single Column C-Leg..... | 27 |
| Dual Column C-Leg | 29 |
| Dual Column H-Leg | 31 |
| Single Column X-Leg | 33 |
| 4 & 5 Column X-Bases | 36 |

SIENNA SERIES

| | |
|-----------------------------------|----|
| Sienna Round & Square Bases | 37 |
| Sienna X Bases | 39 |
| Sienna Café Power | 41 |
| Sienna Rectangle Base..... | 43 |
| Sienna T-Leg & C-Leg | 44 |

STRUCTURE SERIES

| | |
|------------------------------|----|
| Square End Base..... | 46 |
| Square H-Leg | 47 |
| Structure T-Leg & C-Leg..... | 48 |
| Structure Post Leg..... | 49 |
| Structure 4X-Base..... | 50 |
| Structure Cube | 52 |



TABLE BASES & ACCESSORIES

CATALOG & PRICE LIST

Effective January 15, 2026

ADJUSTABLE HEIGHT

| | |
|---|----|
| Spring Clip Height Adjustable Bases..... | 53 |
| Patriot Electric Height Adjustable Base | 55 |
| Hike Electric Height Adjustable base | 57 |

FOLDING

| | |
|-----------------------------|----|
| Folding T-Leg & C-Leg | 58 |
|-----------------------------|----|

FLIP & NEST

| | |
|--------------------------|----|
| Kingston Flip Base | 59 |
| Transform-2 Base | 61 |

ACCESSORIES

| | |
|--|----|
| Casters & Glides..... | 62 |
| Perforated Steel Modesty Panels | 63 |
| Frosted Acrylic Modesty Panels & Privacy Screens | 64 |
| Laminate Modesty Panels | 65 |
| Power & Data | 66 |
| Horizontal Wire Management..... | 68 |
| Vertical Wire Managment..... | 69 |
| Table Connector..... | 70 |
| Top Support | 70 |

TOPS

| | |
|-----------------------|----|
| Best Value Tops | 71 |
|-----------------------|----|

FINISHES

| | |
|-----------------------------|----|
| Metal Finishes | 72 |
| Patriot Metal Finishes..... | 73 |

IMPORTANT INFORMATION

| | |
|--------------------------------|----|
| Ordering Information | 75 |
| Warranty & Return Policy | 76 |

STAINLESS STEEL ROUND BASE

The stainless steel Round Base is composed of 304-grade stainless steel. The high quality, beautiful finish, and style make this base perfect for office, restaurant, and hospitality applications.

FEATURES

| | |
|---------------------|---|
| UNIT HEIGHT: | 27.75" 40.75" SSP720-RB is available only in 27.75" height |
| MOUNTING PLATE: | 13.75" x 13.75" square pressed steel |
| COLUMN: | 3" diameter; 1.5 mm thick; 304-grade stainless steel |
| FLOOR PLATE: | 17-23/32" x 17-23/32" 22-27/32" x 22-27/32" 28-23/64" x 28-23/64" Cover plate is 1mm thick 304-grade Sunray Brushed Stainless Steel |
| LEVELING GLIDES: | 3/4" diameter plastic for leveling on uneven floors |
| FINISH: | Brushed Stainless Steel |
| METHOD OF ASSEMBLY: | Bolted construction |
| PACKAGING: | SSP450-RB are packed in 3 boxes SSP720-RB are packaged in 5 boxes |



SSP450-RB



SSP720-RB

STAINLESS STEEL ROUND BASE PRICING

| PART # | UNIT HEIGHT | FLOOR PLATE DIAMETER | RECOMMENDED TOP SIZE | NET WEIGHT | LIST PRICE |
|-------------------------------|-------------|----------------------|----------------------|------------|------------|
| SSP450-RB | 27.75" | 17-23/32" | ≤ 32" Rd. | 34 lbs | 849 |
| | | | ≤ 28" Sq. | | |
| SSP580-RB | 27.75" | 22-27/32" | ≤ 40" Rd. | 49 lbs | 1,178 |
| | | | ≤ 36" Sq. | | |
| SSP450-RB-42 | 40.75" | 17-23/32" | ≤ 30" Rd. | 36 lbs | 953 |
| | | | ≤ 24" Sq. | | |
| SSP580-RB-42 | 40.75" | 22-27/32" | ≤ 36" Rd. | 51 lbs | 1,282 |
| | | | ≤ 32" Sq. | | |
| SSP720-RB 3 columns | 27.75" | 28-23/64" | ≤ 60" Rd. | 91 lbs | 1,121 |
| | | | ≤ 54" Sq. | | |

STAINLESS STEEL SQUARE BASE

Classic design meets a beautiful finish in this stainless steel table base; our Square Base features 304-grade stainless steel. It is perfect for architectural, office, restaurant, and hospitality applications.

FEATURES

| | |
|---------------------|---|
| UNIT HEIGHT: | 27.75" 40.75" |
| MOUNTING PLATE: | 13.75" x 13.75" square pressed steel |
| COLUMN: | 3" diameter; 1.5 mm thick; 304-grade stainless steel |
| FLOOR PLATE: | 17-23/32" x 17-23/32" 22-27/32" x 22-27/32" Cover plate is 1mm thick 304-grade linear Sunray Brushed Stainless Steel |
| LEVELING GLIDES: | 3/4" diameter plastic for leveling on uneven floors |
| FINISH: | Brushed Stainless Steel |
| METHOD OF ASSEMBLY: | Bolted construction |
| PACKAGING: | Bases are packed in 3 boxes |



SSP450-SB

STAINLESS STEEL SQUARE BASE PRICING

| PART # | UNIT HEIGHT | FLOOR PLATE | RECOMMENDED TOP SIZE | NET WEIGHT | LIST PRICE |
|--------------|-------------|-------------|----------------------|------------|------------|
| SSP450-SB | 27.75" | 17-23/32" | ≤ 32" Rd. | 39 lbs | 893 |
| | | | ≤ 28" Sq. | | |
| SSP580-SB | 27.75" | 22-27/32" | ≤ 40" Rd. | 59 lbs | 1,218 |
| | | | ≤ 36" Sq. | | |
| SSP450-SB-42 | 40.75" | 17-23/32" | ≤ 30" Rd. | 41 lbs | 996 |
| | | | ≤ 24" Sq. | | |
| SSP580-SB-42 | 40.75" | 22-27/32" | ≤ 36" Rd. | 61 lbs | 1,322 |
| | | | ≤ 32" Sq. | | |

STAINLESS STEEL BOLT DOWN LEG

This stylish yet heavy-duty base provides form and function in bolt-down applications. It is perfect for office or hospitality settings. The base bolts to the floor with an 8" diameter floor plate and has a 3" column diameter.

FEATURES

| | |
|---------------------|---|
| UNIT HEIGHT: | 27.75" 40.75" |
| MOUNTING PLATE: | 13.75" x 13.75" square pressed steel |
| COLUMN: | 3" diameter; 1.5 mm thick; 304- grade stainless steel |
| FLOOR PLATE: | 8" diameter; cover plate is 1mm thick 304-grade Sunray Brushed Stainless Steel |
| FINISH: | Brushed Stainless Steel |
| METHOD OF ASSEMBLY: | Bolted construction |
| PACKAGING: | Bases are packed in 3 boxes |



SSBD

STAINLESS STEEL BOLT DOWN LEG PRICING

| PART # | UNIT HEIGHT | COLUMN DIAMETER | RECOMMENDED TOP SIZE | NET WEIGHT | LIST PRICE |
|---------|-------------|-----------------|----------------------|------------|------------|
| SSBD | 27.75" | 3" | ≤ 24" Rd. | 16 lbs | 420 |
| | | | ≤ 24" Sq. | | |
| SSBD-42 | 40.75" | 3" | ≤ 24" Rd. | 22 lbs | 524 |
| | | | ≤ 24" Sq. | | |

STAINLESS STEEL POST LEG

Our Stainless Steel Post Leg is crafted from high-quality stainless steel.

FEATURES

| | |
|---------------------|--|
| UNIT HEIGHT: | 27.75" 34.75" 40.75" |
| MOUNTING PLATE: | 5" x 5", 2.5 mm die-stamped steel |
| COLUMN: | 3" diameter; 1.5 mm thick; 304-grade stainless steel |
| LEVELING GLIDES: | 3.25" x .75" black plastic with 1/2" of adjustment |
| FINISH: | Brushed Stainless Steel |
| METHOD OF ASSEMBLY: | Bolted construction |
| PACKAGING: | Bases are packaged 2 per box, priced individually |



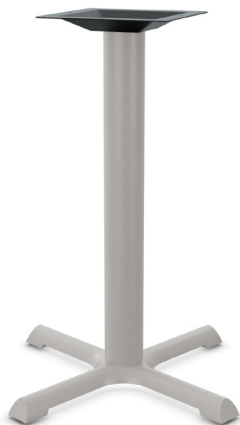
SS29-PL

STAINLESS STEEL POST LEG PRICING

| PART # | UNIT HEIGHT | COLUMN DIAMETER | NET WEIGHT | LIST PRICE |
|----------------|-------------|-----------------|------------|------------|
| SS29-PL | 27.75" | 3" | 6 lbs | 247 |
| SS36-PL | 34.75" | 3" | 7 lbs | 297 |
| SS42-PL | 40.75" | 3" | 8 lbs | 351 |

CAST IRON X & T BASES

The Cast Iron 2.0 X and T Bases are fabricated from an 11 gauge tubular steel column and a heavy-duty cast iron floor base. Die-formed steel threaded rod and nut are used for assembly.



CI-2222X



CI-24T

CI-2222X-42-FR
With Foot Ring

■ FEATURES

| | |
|---------------------|---|
| UNIT HEIGHT: | 27.75" 40.75" |
| WELDED | |
| MOUNTING PLATE: | 9.5" x 9.5" x 5/32" die-stamped steel |
| COLUMN: | 3" diameter |
| LEVELING GLIDES: | 1-1/8" diameter plastic for leveling on uneven floors |
| FINISH: | Black Wrinkle and Fog Gray |
| METHOD OF ASSEMBLY: | Bolted construction |
| PACKAGING: | Foot and column are packaged in 2 boxes |

■ OPTIONS

| | |
|-----------------------|---|
| SELF LEVELING GLIDES: | Specify -SLG |
| FOOT RING: | Specify -FR 16" diameter, 12" high foot ring for 40.75" high bases |

■ CAST IRON 2.0 X & T BASES PRICING

| TYPE | PART # | UNIT HEIGHT | BASE SPREAD | RECOMMENDED TOP SIZE | NET WEIGHT | LIST PRICE |
|------------------------------|-------------|-------------|-------------|-----------------------|------------|------------|
| X-BASES | CI-2222X | 27.75" | 22/22" | ≤ 30" Rd. | 18 lbs | 174 |
| | | | | ≤ 24" Sq. | | |
| | CI-2230X | 27.75" | 22/30" | ≤ 36" Sq. | 20 lbs | 196 |
| | | | | ≤ 36" Rd. | | |
| | CI-3030X | 27.75" | 30/30" | ≤ 42" Sq. | 22 lbs | 218 |
| | | | | ≤ 42" Rd. | | |
| X-BASES BAR HEIGHT | CI-2222X-42 | 40.75" | 22/22" | ≤ 24" Sq. | 21 lbs | 293 |
| | | | | ≤ 24" Rd. | | |
| | CI-2230X-42 | 40.75" | 22/30" | ≤ 36" Sq. | 23 lbs | 314 |
| | | | | ≤ 36" Rd. | | |
| | CI-3030X-42 | 40.75" | 30/30" | ≤ 36" Sq. | 25 lbs | 336 |
| | | | | ≤ 36" Rd. | | |
| T-BASES | CI-24T | 27.75" | 22" | 24" - 30" x 36" - 72" | 15 lbs | 133 |
| | CI-24T-42 | 40.75" | 22" | 24" - 30" x 36" - 72" | 18 lbs | 251 |
| SELF- LEVELLING GLIDES | -SLG | For X Base | | | - | + 100 |
| | -SLG | For T Base | | | - | + 50 |
| FOOT- RING | -FR | 12" | | | 6 lbs | + 116 |

CAST IRON 2.0 ROUND BASES

The Cast Iron 2.0 Round Base features a column made from 11 gauge tubular steel and a heavy-duty cast iron floor plate. Die-formed steel threaded rod and nut are used for



CI-18R

CI-18R-42-FR3
With Foot Ring

■ FEATURES

| | |
|---------------------|---|
| UNIT HEIGHT: | 27.75" 40.75" |
| WELDED | |
| MOUNTING PLATE: | 9.5" x 9.5" x 5/32" die-stamped steel |
| LEVELING GLIDES: | 1-1/8" diameter plastic for leveling on uneven floors |
| FINISH: | Black Wrinkle and Fog Gray |
| METHOD OF ASSEMBLY: | Bolted construction |
| PACKAGING: | Floor plate and column are packaged separately |

■ OPTIONS

| | |
|-----------------------|--|
| SELF LEVELING GLIDES: | Specify -SLG. |
| FOOT RING: | 12" high, for 40.75" high bases Specify -FR-3 16" diameter for 3" column. Specify -FR-4 9.5" diameter for 4" column. |

■ CAST IRON 2.0 ROUND BASES PRICING

| TYPE | PART # | UNIT HEIGHT | FLOOR PLATE | COLUMN DIAMETER | RECOMMENDED TOP SIZE | NET WEIGHT | LIST PRICE |
|---------------------------|-------------------------|--|-------------|-----------------|----------------------|------------|------------|
| ROUND BASES | CI-18R | 27.75" | 18" | 3" | ≤ 30" Rd. | 22 lbs | 218 |
| | | | | | ≤ 24" Sq. | | |
| | CI-24R | 27.75" | 24" | 3" | ≤ 42" Rd. | 40 lbs | 349 |
| | | | | | ≤ 36" Sq. | | |
| | CI-30R | 27.75" | 30" | 4" | ≤ 54" Rd. | 57 lbs | 490 |
| | | | | | ≤ 48" Sq. | | |
| ROUND BASES BAR HEIGHT | CI-18R-42 | 40.75" | 18" | 3" | ≤ 26" Rd. | 26 lbs | 336 |
| | | | | | ≤ 22" Sq. | | |
| | CI-24R-42 | 40.75" | 24" | 3" | ≤ 36" Rd. | 44 lbs | 467 |
| | | | | | ≤ 32" Sq. | | |
| | CI-30R-42 | 40.75" | 30" | 4" | ≤ 48" Rd. | 62 lbs | 609 |
| | | | | | ≤ 42" Sq. | | |
| SELF LEVELING GLIDES | -SLG | Self-leveling glides - 18" Base | | | | - | + 100 |
| | -SLG | Self-leveling glides - 24" and 30" Bases | | | | - | + 125 |
| FOOTRING | -FR-3 for 3" dia column | 12" | - | 16" | - | 6 lbs | + 116 |
| | -FR-4 for 4" dia column | 12" | - | 19.5" | - | 6 lbs | + 116 |

SINGLE COLUMN POST LEGS

Single Column Post Legs are fabricated with 14 gauge steel. Threaded inserts for levelers or casters are welded for maximum strength.

FEATURES

| | |
|------------------------|---|
| UNIT HEIGHT: | 27.75" 40.75" |
| WELDED MOUNTING PLATE: | 4" x 4" x 7/32" or 6" x 6" x 7/32" welded |
| LEVELING GLIDES: | 1-3/8" diameter plastic with steel threaded inserts; PL-27-4 has a 4" metal glide |
| CASTERS: | PL-27-2-C and PL-27-C have a 2" dual-wheel locking caster, 112 lbs capacity |
| FINISH: | Stock color is Black, PL-27-2 is also stocked in Metallic Silver. |
| PACKAGING: | Bases are packaged 2 per box PL-27-2 and PL-27-2-C are packaged 4 per box PL-27-342 and PL-27-442 are packaged one per box Priced individually |

OPTIONS

| | |
|----------------|--|
| CUSTOM HEIGHT: | Specify -CUSTHT1 for height between 5" - 27.75" Specify -CUSTHT2 for height between 27.75" - 40.75" |
|----------------|--|

SINGLE COLUMN POST LEGS PRICING

| PART # | UNIT HEIGHT | COLUMN DIAMETER | MOUNTING PLATE SIZE | NET WEIGHT | LIST PRICE (EACH) |
|-----------------------------------|------------------------------------|-----------------|---------------------|------------|-------------------|
| PL-27-2 | 27.75" | 2" | 4" x 4" | 4 lbs | 84 |
| PL-27-2-MS Metallic Silver | 27.75" | 2" | 4" x 4" | 4 lbs | 84 |
| PL-27-2-C with casters | 27.75" | 2" | 4" x 4" | 4 lbs | 105 |
| PL-27-2FM folding leg | 27.75" | 2" | 5" x 8" | 7 lbs | 259 |
| PL-27-3 | 27.75" | 3" | 6" x 6" | 6 lbs | 124 |
| PL-27-342 | 40.75" | 3" | 6" x 6" | 10 lbs | 195 |
| PL-27-4 | 27.75" | 4" | 6" x 6" | 8 lbs | 168 |
| PL-27-442 | 40.75" | 4" | 6" x 6" | 12 lbs | 239 |
| -CUSTHT1 | For height between 5" - 27.75" | | | | + 76 |
| -CUSTHT2 | For height between 27.75" - 40.75" | | | | + 147 |



PL-27-2FM



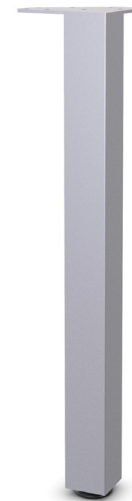
PL-27-4

SQUARE POST LEG

Square post legs are fabricated with 14 gauge square steel threaded inserts for levelers. Post mounts flush with the table corner.

FEATURES

| | |
|------------------|---|
| UNIT HEIGHT: | 27.75" 40.75" |
| WELDED | |
| MOUNTING PLATE: | 5" x 5" x 7/32" |
| LEVELING GLIDES: | 2-3/8" diameter plastic with steel threaded inserts |
| CASTERS: | SQ-RH-C comes with a 2.5" dual-wheel locking caster, 112 lbs capacity |
| FINISH: | SQ-RH is stocked in Black and Metallic Silver |
| PACKAGING: | Bases are packaged 4 per box, priced individually |



SQ-RH

OPTIONS

| | |
|----------------|--|
| CUSTOM HEIGHT: | Specify -CUSTHT1 for height between 5" - 27.75" Specify -CUSTHT2 for height between 27.75" - 40.75" |
|----------------|--|

SQUARE POST LEG PRICING

| PART # | UNIT HEIGHT | COLUMN DIAMETER | NET WEIGHT | LIST PRICE (EACH) |
|---------------------------------|------------------------------------|-----------------|------------|-------------------|
| SQ-RH | 27.75" | 2-3/8" | 6 lbs | 135 |
| SQ-RH-MS Metallic Silver | 27.75" | 2-3/8" | 6 lbs | 135 |
| SQ-RH-C with Caster | 27.75" | 2-3/8" | 6 lbs | 156 |
| SQ-RH-42 Bar Height | 40.75" | 2-3/8" | 9 lbs | 205 |
| -CUSTHT1 | For height between 5" - 27.75" | | | + 76 |
| -CUSTHT2 | For height between 27.75" - 40.75" | | | + 125 |

REVEAL LEG

The Reveal legs are fabricated with 14 gauge 2" diameter tubular steel, 45° angle support is welded to a 6" x 6" mounting plate for maximum strength.

FEATURES

| | |
|------------------|---|
| UNIT HEIGHT: | 27.75" |
| WELDED | |
| MOUNTING PLATE: | 6" x 6" x 7/32" steel |
| LEVELING GLIDES: | 1-3/8" diameter plastic with steel threaded inserts |
| FINISH: | Stock color is Black |
| PACKAGING: | Bases are packaged 2 per box, priced individually |

OPTIONS

| | |
|----------------|---|
| CUSTOM HEIGHT: | Specify -CUSTHT1 for height between 5" - 27.75" |
|----------------|---|



RL

REVEAL LEG PRICING

| PART # | UNIT HEIGHT | COLUMN DIAMETER | MOUNTING PLATE SIZE | NET WEIGHT | LIST PRICE (EACH) |
|----------|--------------------------------|-----------------|---------------------|------------|-------------------|
| RL | 27.75" | 2" | 6" x 6" | 6 lbs | 188 |
| -CUSTHT1 | For height between 5" - 27.75" | | | | + 76 |

BOLT DOWN LEG

This stylish yet heavy-duty base provides form and function in bolt-down applications. It is perfect for educational or hospitality settings—the base bolts to the floor with a 6" diameter plate and 3" column diameter.

FEATURES

| | |
|------------------------|-------------------------------|
| UNIT HEIGHT: | 27.75" 34.75" 40.75" |
| WELDED MOUNTING PLATE: | 10" x 10" |
| COLUMN: | 3" diameter |
| FLOOR PLATE: | 6" diameter cover |
| FINISH: | Stock color is Black |
| METHOD OF ASSEMBLY: | Bolted construction |
| PACKAGING: | Bases are packaged in 2 boxes |



OPTIONS

| | |
|----------------|--|
| CUSTOM HEIGHT: | Specify -CUSTHT1 for height between 5" - 27.75" Specify -CUSTHT2 for height between 27.75" - 40.75" |
|----------------|--|

BOLT DOWN LEG PRICING

| PART # | UNIT HEIGHT | COLUMN DIAMETER | NET WEIGHT | LIST PRICE (EACH) |
|-----------------------------|-----------------|-----------------|--------------|-------------------|
| BD-29 | 27.75" | 3" | 13 lbs | 188 |
| BD-36 Counter Height | 34.75" | 3" | 14 lbs | 259 |
| BD-42 Bar Height | 40.75" | 3" | 15 lbs | 259 |
| -CUSTHT1 | 5" - 27.75" | 3" | up to 13 lbs | + 76 |
| -CUSTHT2 | 27.75" - 40.75" | 3" | up to 15 lbs | + 147 |

SINGLE COLUMN T-LEG

Fabricated 14 gauge steel with steel end caps and threaded inserts for levelers or casters featuring a bolted construction.



TL-24



TL-22-C

■ FEATURES

| | |
|------------------|---|
| UNIT HEIGHT: | 27.75" 34.75" 40.75" |
| WELDED | |
| MOUNTING PLATE: | 5" x 8" x 7/32" steel |
| LEVELING GLIDES: | 1-3/8" diameter plastic with steel threaded inserts |
| FINISH: | Stock color is Black |
| PACKAGING: | Bases are packaged 2 per box, priced individually |

■ OPTIONS

| | |
|-----------------------|--|
| CUSTOM HEIGHT: | Specify -CUSTHT1 for height between 5" - 27.75" Specify -CUSTHT2 for height between 27.75" - 40.75" |
| BAR HEIGHT: | Specify -42 |
| COUNTER HEIGHT: | Specify -36 |
| ADJUSTABLE HEIGHT: | Specify -AH |
| CASTERS: | Specify -C. 2" dual-wheel locking caster, 112 lbs capacity |
| SELF-LEVELING GLIDES: | Specify -SLG |
| FOLDING: | Specify -GFM |

■ SINGLE COLUMN T-LEG PRICING

| | PART # | UNIT HEIGHT | COLUMN DIAMETER | BASE SPREAD | MOUNTING PLATE SIZE | RECOMMENDED TOP DEPTH | NET WEIGHT | LIST PRICE (EACH) |
|----------------|----------|-------------|-----------------|-------------|---------------------|-----------------------|------------|-------------------|
| STANDARD | TL-18 | 27.75" | 2" | 16" | 5" x 8" | 24" - 28" | 7.50 lbs | 198 |
| | TL-20 | 27.75" | 2" | 18" | 5" x 8" | 26" - 32" | 7.75 lbs | 198 |
| | TL-22 | 27.75" | 2" | 20" | 5" x 8" | 28" - 24" | 8.00 lbs | 202 |
| | TL-24 | 27.75" | 2" | 22" | 5" x 8" | 30" - 36" | 8.50 lbs | 202 |
| | TL-30 | 27.75" | 2" | 26" | 5" x 8" | 42" - 46" | 9.00 lbs | 206 |
| CASTERS | TL-18-C | 27.75" | 2" | 16" | 5" x 8" | 24" - 28" | 7.50 lbs | 240 |
| | TL-20-C | 27.75" | 2" | 18" | 5" x 8" | 26" - 32" | 7.75 lbs | 240 |
| | TL-22-C | 27.75" | 2" | 20" | 5" x 8" | 28" - 24" | 8.00 lbs | 244 |
| | TL-24-C | 27.75" | 2" | 22" | 5" x 8" | 30" - 36" | 8.50 lbs | 244 |
| | TL-30-C | 27.75" | 2" | 26" | 5" x 8" | 42" - 46" | 9.00 lbs | 248 |
| COUNTER HEIGHT | TL-18-36 | 34.75" | 2" | 16" | 5" x 8" | 24" - 28" | 8.50 lbs | 268 |
| | TL-20-36 | 34.75" | 2" | 18" | 5" x 8" | 26" - 32" | 7.75 lbs | 268 |
| | TL-22-36 | 34.75" | 2" | 20" | 5" x 8" | 28" - 24" | 8.50 lbs | 272 |
| | TL-24-36 | 34.75" | 2" | 22" | 5" x 8" | 30" - 36" | 9.00 lbs | 272 |
| | TL-30-36 | 34.75" | 2" | 26" | 5" x 8" | 42" - 46" | 10.00 lbs | 277 |
| BAR HEIGHT | TL-18-42 | 40.75" | 2" | 16" | 5" x 8" | 24" - 28" | 9.50 lbs | 268 |
| | TL-20-42 | 40.75" | 2" | 18" | 5" x 8" | 26" - 32" | 9.75 lbs | 268 |
| | TL-22-42 | 40.75" | 2" | 20" | 5" x 8" | 28" - 24" | 10.00 lbs | 272 |
| | TL-24-42 | 40.75" | 2" | 22" | 5" x 8" | 30" - 36" | 10.50 lbs | 272 |
| | TL-30-42 | 40.75" | 2" | 26" | 5" x 8" | 42" - 46" | 11.00 lbs | 277 |

■ SINGLE COLUMN T-LEG PRICING

| | PART # | UNIT HEIGHT | COLUMN DIAMETER | BASE SPREAD | MOUNTING PLATE SIZE | RECOMMENDED TOP DEPTH | NET WEIGHT | LIST PRICE (EACH) |
|---------------------|------------|------------------------------------|-----------------|-------------|---------------------|-----------------------|------------|-------------------|
| ADJUSTABLE HEIGHT | TL-18-AH | 24.75 - 34.75" | 2" | 16" | 5" x 8" | 24" - 28" | 10.50 lbs | 319 |
| | TL-20-AH | 24.75 - 34.75" | 2" | 18" | 5" x 8" | 26" - 32" | 10.75 lbs | 319 |
| | TL-22-AH | 24.75 - 34.75" | 2" | 20" | 5" x 8" | 28" - 24" | 11.00 lbs | 323 |
| | TL-24-AH | 24.75 - 34.75" | 2" | 22" | 5" x 8" | 30" - 36" | 11.50 lbs | 323 |
| | TL-30-AH | 24.75 - 34.75" | 2" | 26" | 5" x 8" | 42" - 46" | 12.00 lbs | 327 |
| AH 34.75 - 44.75 | TL-18-42AH | 34.75 - 44.75" | 2" | 16" | 5" x 8" | 24" - 28" | 9.50 lbs | 429 |
| | TL-24-42AH | 34.75 - 44.75" | 2" | 18" | 5" x 8" | 30" - 36" | 10.50 lbs | 433 |
| | TL-30-42AH | 34.75 - 44.75" | 2" | 20" | 5" x 8" | 42" - 46" | 11.00 lbs | 437 |
| FOLDING | TL-18-GFM | 27.75" | 2" | 16" | 5" x 8" | 24" - 28" | 10.50 lbs | 472 |
| | TL-20-GFM | 27.75" | 2" | 18" | 5" x 8" | 26" - 32" | 10.75 lbs | 472 |
| | TL-22-GFM | 27.75" | 2" | 20" | 5" x 8" | 28" - 24" | 11.00 lbs | 476 |
| | TL-24-GFM | 27.75" | 2" | 22" | 5" x 8" | 30" - 36" | 11.50 lbs | 476 |
| | TL-30-GFM | 27.75" | 2" | 26" | 5" x 8" | 42" - 46" | 12.00 lbs | 480 |
| OPTIONS | -CUSTHT1 | For height between 5" - 27.75" | | | | | | + 76 |
| | -CUSTHT2 | For height between 27.75" - 40.75" | | | | | | + 147 |
| | -C | Casters | | | | | | + 44 |
| | -SLG | Self-leveling Glides | | | | | | + 50 |

WELDED SINGLE COLUMN T-LEG

Fabricated 14 gauge steel with steel endcaps and threaded inserts for levelers or casters. Featuring welded construction.

FEATURES

| | |
|------------------------|---|
| UNIT HEIGHT: | 27.75" |
| WELDED MOUNTING PLATE: | 5" x 8" x 7/32" steel |
| LEVELING GLIDES: | 1-3/8" diameter plastic with steel threaded inserts |
| FINISH: | Stock color is Black |
| PACKAGING: | Bases are packaged 2 per box, priced individually |



TL-24W

OPTIONS

| | |
|-----------------------|----------------|
| Self-leveling Glides: | Specify -SLG-8 |
|-----------------------|----------------|

WELDED SINGLE COLUMN T-LEG PRICING

| PART # | UNIT HEIGHT | COLUMN DIAMETER | BASE SPREAD | RECOMMENDED TOP DEPTH | NET WEIGHT | LIST PRICE (EACH) |
|--------|----------------------|-----------------|-------------|-----------------------|------------|-------------------|
| TL-18W | 27.75" | 2" | 16" | 18" - 20" | 7 lbs | 198 |
| TL-24W | 27.75" | 2" | 22" | 24" - 28" | 8 lbs | 202 |
| TL-30W | 27.75" | 2" | 26" | 28" - 30" | 9.5 lbs | 206 |
| TL-36W | 27.75" | 2" | 30" | 34" - 36" | 10 lbs | 283 |
| -SLG | Self-leveling Glides | | | | | + 50 |

EZ-ROLL T-LEG

T-Leg with concealed EZ-Roll wheels is stationary or can be mobile when tilted. Fabricated 14 gauge 2" diameter columns with steel endcaps and hid EZ-Roll wheels.

FEATURES

| | |
|-----------------|---|
| UNIT HEIGHT: | 27.75" |
| WELDED | |
| MOUNTING PLATE: | 5" x 8" x 7/32" |
| EZ-ROLL WHEELS: | 1.5" diameter built-in wheels |
| FINISH: | Stock color is Black |
| PACKAGING: | Bases are packed 2 per box, priced individually |



TL30-EZ



Built-in EZ-Roll wheel

OPTIONS

| | |
|----------------|---|
| CUSTOM HEIGHT: | Specify -CUSTHT1 for height between 5" - 27.75" |
|----------------|---|

EZ-ROLL T-LEG PRICING

| PART # | COLUMN DIAMETER | BASE SPREAD | RECOMMENDED TOP DEPTH | NET WEIGHT | LIST PRICE (EACH) |
|-----------|--------------------------------|-------------|-----------------------|------------|-------------------|
| TL-18-EZR | 2" | 16" | 18" - 22" | 7 lbs | 247 |
| TL-24-EZR | 2" | 22" | 24" - 26" | 8 lbs | 250 |
| TL-30-EZR | 2" | 26" | 28" - 30" | 9 lbs | 252 |
| -CUSTHT1 | For height between 5" - 27.75" | | | | + 76 |

DUAL COLUMN T-LEGS

Fabricated 14 gauge steel with steel endcaps and threaded inserts for levelers or casters.



2TL-30



2TL-30-C

■ FEATURES

| | |
|------------------|--|
| UNIT HEIGHT: | 27.75" 40.75" |
| MOUNTING PLATE: | 7/32" steel |
| LEVELING GLIDES: | 1-3/8" diameter plastic with steel threaded inserts |
| FINISH: | Stock color is Black |
| PACKAGING: | 2TL-24, 2TL-30, 2TL-36, 2TL-42, and 2TL-48 bases are packed 2 per box, priced individually 2TL-60 bases are packed 1 per box, priced individually |

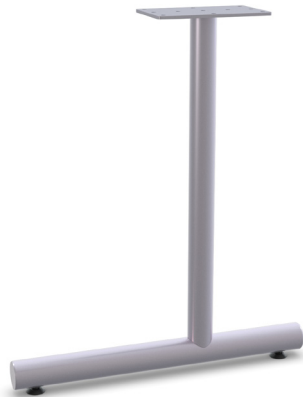
■ OPTIONS

| | |
|-----------------------|--|
| CUSTOM HEIGHT: | Specify -CUSTHT1 for height between 5" - 27.75" Specify -CUSTHT2 for height between 27.75" - 40.75" |
| BAR HEIGHT: | Specify -42 |
| ADJUSTABLE HEIGHT: | Specify -AH |
| CASTERS: | Specify -C. 2" dual-wheel locking caster |
| SELF LEVELING GLIDES: | Specify -SLG |

■ DUAL COLUMN T-LEGS PRICING

| | PART # | UNIT HEIGHT | COLUMN DIAMETER | BASE SPREAD | MOUNTING PLATE SIZE | RECOMMENDED TOP DEPTH | NET WEIGHT | LIST PRICE (EACH) |
|-------------------|-----------|------------------------------------|-----------------|-------------|---------------------|-----------------------|------------|-------------------|
| STANDARD | 2TL-24 | 27.75" | 2" | 22" | 5" x 11" welded | 24" - 28" | 13 lbs | 271 |
| | 2TL-30 | 27.75" | 2" | 26" | 5" x 11" welded | 30" - 36" | 14 lbs | 275 |
| | 2TL-42 | 27.75" | 2" | 36" | 6" x 16" | 42" - 46" | 17 lbs | 298 |
| | 2TL-48 | 27.75" | 2" | 42" | 6" x 16" | 48" - 52" | 17 lbs | 311 |
| | 2TL-60 | 27.75" | 2-3/8" | 42" | (2) 6" x 6" | 52" - 60" | 18 lbs | 404 |
| CASTERS | 2TL-24-C | 27.75" | 2" | 22" | 5" x 11" welded | 24" - 28" | 13 lbs | 313 |
| | 2TL-30-C | 27.75" | 2" | 26" | 5" x 11" welded | 30" - 36" | 14 lbs | 317 |
| | 2TL-42-C | 27.75" | 2" | 36" | 6" x 16" | 42" - 46" | 17 lbs | 340 |
| | 2TL-48-C | 27.75" | 2" | 42" | 6" x 16" | 48" - 52" | 17 lbs | 353 |
| BAR HEIGHT | 2TL-24-42 | 40.75" | 2" | 22" | 5" x 11" welded | 24" - 28" | 18 lbs | 411 |
| | 2TL-30-42 | 40.75" | 2" | 26" | 5" x 11" welded | 30" - 36" | 19 lbs | 414 |
| | 2TL-42-42 | 40.75" | 2" | 36" | 6" x 16" | 42" - 46" | 22 lbs | 437 |
| | 2TL-48-42 | 40.75" | 2" | 42" | 6" x 16" | 48" - 52" | 22 lbs | 451 |
| ADJUSTABLE HEIGHT | 2TL-24-AH | 24.75" - 34.75" | 2" | 22" | (2) 5" x 8" | 24" - 28" | 19 lbs | 512 |
| | 2TL-30-AH | 24.75" - 34.75" | 2" | 26" | (2) 5" x 8" | 30" - 36" | 20 lbs | 515 |
| | 2TL-42-AH | 24.75" - 34.75" | 2" | 36" | (2) 5" x 8" | 42" - 46" | 23 lbs | 538 |
| | 2TL-48-AH | 24.75" - 34.75" | 2" | 42" | (2) 5" x 8" | 48" - 52" | 23 lbs | 552 |
| CUSTOM HEIGHT | -CUSTHT1 | For height between 5" - 27.75" | | | | | | + 76 |
| | -CUSTHT2 | For height between 27.75" - 40.75" | | | | | | + 216 |
| SLG | -SLG | Self-leveling Glides | | | | | | + 50 |

Fabricated 14 gauge steel with steel endcaps and threaded inserts for levelers or casters.



CL-24



CL-24-C

■ FEATURES

| | |
|------------------|---|
| UNIT HEIGHT: | 27.75" 34.75 40.75" |
| MOUNTING PLATE: | 5" x 8" 7/32" steel |
| LEVELING GLIDES: | 1-3/8" diameter plastic with steel threaded inserts |
| FINISH: | Stock color is Black |
| PACKAGING: | Bases are packed 2 per box, priced individually |

■ OPTIONS

| | |
|-----------------------|--|
| CUSTOM HEIGHT: | Specify -CUSTHT1 for height between 5" - 27.75" Specify -CUSTHT2 for height between 27.75" - 40.75" |
| BAR HEIGHT: | Specify -42 |
| COUNTER HEIGHT: | Specify -36 |
| ADJUSTABLE HEIGHT: | Specify -AH |
| CASTERS: | Specify -C. 2" dual-wheel locking caster, 112 lbs capacity |
| SELF LEVELING GLIDES: | Specify -SLG |
| FOLDING: | Specify -GFM |

■ SINGLE COLUMN C-LEGS PRICING

| | PART # | UNIT HEIGHT | COLUMN DIAMETER | BASE SPREAD | MOUNTING PLATE SIZE | RECOMMENDED TOP DEPTH | NET WEIGHT | LIST PRICE (EACH) |
|-------------------|-----------|------------------------------------|-----------------|-------------|---------------------|-----------------------|------------|-------------------|
| STANDARD | CL-18 | 27.75" | 2" | 22" | 5" x 8" | 24" - 28" | 7.5 lbs | 198 |
| | CL-24 | 27.75" | 2" | 26" | 5" x 8" | 30" - 36" | 8.5 lbs | 202 |
| | CL-30 | 27.75" | 2" | 36" | 5" x 8" | 42" - 46" | 9.0 lbs | 206 |
| CASTERS | CL-18-C | 27.75" | 2" | 22" | 5" x 8" | 24" - 28" | 7.5 lbs | 240 |
| | CL-24-C | 27.75" | 2" | 26" | 5" x 8" | 30" - 36" | 8.5 lbs | 244 |
| | CL-30-C | 27.75" | 2" | 36" | 5" x 8" | 42" - 46" | 9.0 lbs | 248 |
| COUNTER HEIGHT | CL-18-36 | 34.75" | 2" | 22" | 5" x 8" | 24" - 28" | 8.5 lbs | 268 |
| | CL-24-36 | 34.75" | 2" | 26" | 5" x 8" | 30" - 36" | 9.0 lbs | 272 |
| | CL-30-36 | 34.75" | 2" | 36" | 5" x 8" | 42" - 46" | 10.0 lbs | 277 |
| BAR HEIGHT | CL-18-42 | 40.75" | 2" | 22" | 5" x 8" | 24" - 28" | 9.5 lbs | 268 |
| | CL-24-42 | 40.75" | 2" | 26" | 5" x 8" | 30" - 36" | 10.5 lbs | 272 |
| | CL-30-42 | 40.75" | 2" | 36" | 5" x 8" | 42" - 46" | 11.0 lbs | 277 |
| ADJUSTABLE HEIGHT | CL-18-AH | 24.75" - 34.75" | 2" | 22" | 5" x 8" | 24" - 28" | 10.5 lbs | 319 |
| | CL-24-AH | 24.75" - 34.75" | 2" | 26" | 5" x 8" | 30" - 36" | 11.5 lbs | 323 |
| | CL-30-AH | 24.75" - 34.75" | 2" | 36" | 5" x 8" | 42" - 46" | 12.0 lbs | 327 |
| FOLDING | CL-18-GFM | 27.75" | 2" | 22" | 5" x 8" | 24" - 28" | 10.0 lbs | 472 |
| | CL-24-GFM | 27.75" | 2" | 26" | 5" x 8" | 30" - 36" | 11.0 lbs | 476 |
| | CL-30-GFM | 27.75" | 2" | 36" | 5" x 8" | 42" - 46" | 11.5 lbs | 480 |
| CUSTOM HEIGHT | -CUSTHT1 | For height between 5" - 27.75" | | | | | | + 76 |
| | -CUSTHT2 | For height between 27.75" - 40.75" | | | | | | + 147 |
| SLG | -SLG | Self-leveling Glides | | | | | | + 50 |

DUAL COLUMN C-LEGS

Fabricated 14 gauge steel with steel endcaps and threaded inserts for levelers or casters.



2CL-30



2CL-30-C

■ FEATURES

| | |
|------------------|---|
| UNIT HEIGHT: | 27.75" 34.75 40.75" |
| MOUNTING PLATE: | 5" x 11" 7/32" steel |
| LEVELING GLIDES: | 1-3/8" diameter plastic with steel threaded inserts |
| FINISH: | Stock color is Black |
| PACKAGING: | Bases are packed 2 per box, priced individually |

■ OPTIONS

| | |
|-----------------------|--|
| CUSTOM HEIGHT: | Specify -CUSTHT1 for height between 5" - 27.75" Specify -CUSTHT2 for height between 27.75" - 40.75" |
| BAR HEIGHT: | Specify -42 |
| ADJUSTABLE HEIGHT: | Specify -AH |
| CASTERS: | Specify -C. 2" dual-wheel locking caster, 112 lbs capacity |
| SELF LEVELING GLIDES: | Specify -SLG.-M8 |

■ DUAL COLUMN C-LEG PRICING

| | PART # | UNIT HEIGHT | COLUMN DIAMETER | BASE SPREAD | MOUNTING PLATE SIZE | RECOMMENDED TOP DEPTH | NET WEIGHT | LIST PRICE (EACH) |
|-------------------|------------------|------------------------------------|-----------------|-------------|---------------------|-----------------------|------------|-------------------|
| STANDARD | 2CL-24 | 27.75" | 2" | 22" | 5" x 11" welded | 24"- 28" | 13 lbs | 271 |
| | 2CL-30 | 27.75" | 2" | 26" | 5" x 11" welded | 28"- 30" | 14 lbs | 275 |
| CASTERS | 2CL-24-C | 27.75" | 2" | 22" | (2) 5" x 8" | 24"- 28" | 13 lbs | 313 |
| | 2CL-30-C | 27.75" | 2" | 26" | (2) 5" x 8" | 28"- 30" | 14 lbs | 317 |
| BAR HEIGHT | 2CL-24-42 | 40.75" | 2" | 22" | (2) 5" x 8" | 24"- 28" | 18 lbs | 411 |
| | 2CL-30-42 | 40.75" | 2" | 26" | (2) 5" x 8" | 28"- 30" | 19 lbs | 414 |
| ADJUSTABLE HEIGHT | 2CL-24-AH | 24.75" - 34.75" | 2" | 22" | (2) 5" x 8" | 24"- 28" | 19 lbs | 512 |
| | 2CL-30-AH | 24.75" - 34.75" | 2" | 26" | (2) 5" x 8" | 28"- 30" | 20 lbs | 515 |
| CUSTOM HEIGHT | -CUSTHT1 | For height between 5" - 27.75" | | | | | | + 152 |
| | -CUSTHT2 | For height between 27.75" - 40.75" | | | | | | + 292 |
| SLG | -SLG | Self-leveling Glides | | | | | | + 50 |

DUAL COLUMN H-LEGS

Fabricated 14 gauge steel with threaded inserts for levelers or casters.



■ FEATURES

| | |
|------------------|---|
| UNIT HEIGHT: | 27.75" 34.75 40.75" |
| MOUNTING PLATE: | (2) 6" x 6" x 7/32" steel |
| LEVELING GLIDES: | 1-3/8" diameter plastic with steel threaded inserts |
| FINISH: | Stock color is Black |
| PACKAGING: | Bases are packed 2 per box, priced individually |

■ OPTIONS

| | |
|-----------------------|--|
| CUSTOM HEIGHT: | Specify -CUSTHT1 for height between 5" - 27.75" Specify -CUSTHT2 for height between 27.75" - 40.75" |
| COUNTER HEIGHT: | Specify -36 |
| BAR HEIGHT: | Specify -42 |
| SELF LEVELING GLIDES: | Specify -SLG |

■ DUAL COLUMN H-LEGS PRICING

| | PART # | UNIT HEIGHT | COLUMN DIAMETER | BASE SPREAD | RECOMMENDED TOP DEPTH | NET WEIGHT | LIST PRICE (EACH) |
|----------------|----------|------------------------------------|-----------------|-------------|-----------------------|------------|-------------------|
| STANDARD | HL-24 | 27.75" | 2" | 16.5" | 24" - 28" | 12 lbs | 198 |
| | HL-30 | 27.75" | 2" | 22.5" | 30" - 40" | 13 lbs | 223 |
| | HL-330 | 27.75" | 3" | 23.5" | 30" - 40" | 18 lbs | 259 |
| | HL-342 | 27.75" | 3" | 30" | 42" - 48" | 18 lbs | 301 |
| CASTERS | HL-24-C | 27.75" | 2" | 16.5" | 24" - 28" | 12 lbs | 240 |
| | HL-30-C | 27.75" | 2" | 22.5" | 30" - 40" | 13 lbs | 265 |
| COUNTER HEIGHT | HL-2436 | 34.75" | 2" | 16.5" | 24" - 28" | 13 lbs | 338 |
| | HL-3036 | 34.75" | 2" | 22.5" | 30" - 40" | 15 lbs | 363 |
| BAR HEIGHT | HL-2442 | 40.75" | 2" | 16.5" | 24" - 28" | 15 lbs | 338 |
| | HL-3042 | 40.75" | 2" | 22.5" | 30" - 40" | 16 lbs | 363 |
| CUSTOM HEIGHT | -CUSTHT1 | For height between 5" - 27.75" | | | | | + 152 |
| | -CUSTHT2 | For height between 27.75" - 40.75" | | | | | + 292 |
| SLG | -SLG | Self-leveling Glides | | | | | + 50 |

SINGLE COLUMN X-BASES

Fabricated 14 gauge steel with steel endcaps and threaded inserts for levelers or casters.
Bolted construction



XL-36



XL-24QF
Quick-Flip Mechanism



XL-42-36
Rectangular X Base

■ FEATURES

| | |
|------------------|---|
| UNIT HEIGHT: | 27.75" |
| LEVELING GLIDES: | 1-3/8" diameter plastic with steel threaded inserts |
| FINISH: | Stock color is Black |
| PACKAGING: | Bases are packaged in 2 boxes |

■ OPTIONS

| | |
|-----------------------|--|
| CUSTOM HEIGHT: | Specify -CUSTHT1 for height between 5" - 27.75" Specify -CUSTHT2 for height between 27.75" - 40.75" |
| BAR HEIGHT: | Specify -42 |
| CASTERS: | Specify -C. 2" dual-wheel locking caster, 112 lbs capacity |
| SELF LEVELING GLIDES: | Specify -SLG |
| FLIP TOP: | Specify -QF Quick-flip mechanism flips top by pulling on the release handle. Top locks automatically when returned to a horizontal position |

■ SINGLE COLUMN X-BASES PRICING

| | PART # | COLUMN DIAMETER | BASE SPREAD | MOUNTING PLATE SIZE | RECOMMENDED TOP SIZE | | NET WEIGHT | LIST PRICE |
|---------------------------|----------|------------------------------------|-------------|---------------------|----------------------|---------------|------------|------------|
| | | | | | ROUND | SQUARE | | |
| FIXED TOP STANDARD HEIGHT | XL-24 | 3" | 20" x 20" | 8" x 8" | 20" - 24" Rd. | 20" - 22" Sq. | 15 lbs | 301 |
| | XL-30 | 3" | 26" x 26" | 8" x 8" | 26" - 36" Rd. | 26" - 30" Sq. | 17 lbs | 311 |
| | XL-36 | 3" | 32" x 32" | 8" x 8" | 32" - 42" Rd. | 32" - 36" Sq. | 19 lbs | 319 |
| | XL-42 | 3" | 36" x 36" | 8" x 8" | 36" - 48" Rd. | 36" - 42" Sq. | 21 lbs | 327 |
| | XL-48 | 3" | 42" x 42" | 8" x 8" | 42" - 52" Rd. | 42" - 48" Sq. | 23 lbs | 339 |
| | | | | | RECTANGULAR | | | |
| | XL-36/24 | 3" | 32" x 20" | 8" x 8" | 36" x 24" | | 13 lbs | 319 |
| | XL-48/30 | 3" | 42" x 26" | 8" x 8" | 48" x 30" | | 15 lbs | 339 |
| CUSTOM HEIGHT | -CUSTHT1 | For height between 5" - 27.75" | | | | | | + 76 |
| | -CUSTHT2 | For height between 27.75" - 40.75" | | | | | | + 154 |
| SLG | -SLG | Self-leveling Glides | | | | | | + 147 |

■ SINGLE COLUMN X-BASES PRICING

| | PART # | COLUMN DIAMETER | BASE SPREAD | MOUNTING PLATE SIZE | RECOMMENDED TOP SIZE | | NET WEIGHT | LIST PRICE |
|--|------------|------------------------------------|-------------|---------------------|----------------------|---------------|------------|------------|
| | | | | | ROUND | SQUARE | | |
| FIXED TOP STANDARD HEIGHT WITH CASTERS | XL-24-C | 3" | 20" x 20" | 8" x 8" | 20" - 24" Rd. | 20" - 22" Sq. | 15 lbs | 385 |
| | XL-30-C | 3" | 26" x 26" | 8" x 8" | 26" - 36" Rd. | 26" - 30" Sq. | 17 lbs | 395 |
| | XL-36-C | 3" | 32" x 32" | 8" x 8" | 32" - 42" Rd. | 32" - 36" Sq. | 19 lbs | 403 |
| | XL-42-C | 3" | 36" x 36" | 8" x 8" | 36" - 48" Rd. | 36" - 42" Sq. | 21 lbs | 411 |
| | XL-48-C | 3" | 42" x 42" | 8" x 8" | 42" - 52" Rd. | 42" - 48" Sq. | 23 lbs | 423 |
| | | | | | RECTANGULAR | | | |
| | XL-36/24-C | 3" | 32" x 20" | 8" x 8" | 36" x 24" | | 13 lbs | 403 |
| | XL-48/30-C | 3" | 42" x 26" | 8" x 8" | 48" x 30" | | 15 lbs | 423 |
| CUSTOM HEIGHT | -CUSTHT1 | For height between 5" - 27.75" | | | | | | + 76 |
| | -CUSTHT2 | For height between 27.75" - 40.75" | | | | | | + 100 |
| SLG | -SLG | Self-leveling Glides | | | | | | + 100 |

■ SINGLE COLUMN X-BASES PRICING

| | PART # | COLUMN DIAMETER | BASE SPREAD | MOUNTING PLATE SIZE | RECOMMENDED TOP SIZE | | NET WEIGHT | LIST PRICE |
|----------------------|--------------------|-----------------|-------------|---------------------|----------------------|---------------|------------|------------|
| | | | | | ROUND | SQUARE | | |
| FIXED TOP BAR HEIGHT | XL-24-42 | 3" | 20" x 20" | 8" x 8" | 20" - 24" Rd. | 20" - 22" Sq. | 15 lbs | 371 |
| | XL-30-42 | 3" | 26" x 26" | 8" x 8" | 26" - 36" Rd. | 26" - 30" Sq. | 17 lbs | 382 |
| | XL-36-42 | 3" | 32" x 32" | 8" x 8" | 32" - 42" Rd. | 32" - 36" Sq. | 19 lbs | 389 |
| | XL-42-42 | 3" | 36" x 36" | 8" x 8" | 36" - 48" Rd. | 36" - 42" Sq. | 21 lbs | 397 |
| | XL-48-42 | 3" | 42" x 42" | 8" x 8" | 42" - 52" Rd. | 42" - 48" Sq. | 23 lbs | 409 |
| | | | | | RECTANGULAR | | | |
| | XL-36/24-42 | 3" | 32" x 20" | 8" x 8" | 36" x 24" | | 13 lbs | 389 |
| | XL-48/30-42 | 3" | 42" x 26" | 8" x 8" | 48" x 30" | | 15 lbs | 409 |

4 & 5 COLUMN X-BASES

Fabricated 14 gauge steel with steel endcaps and threaded inserts for levelers or casters. Bolted construction featuring 4-columns or 5-columns.



4XL-38



4XL-38-C



5XL-48

FEATURES

UNIT HEIGHT: 27.75"

MOUNTING PLATE: 4 column base - (4) 4" x 4" x 7/32" steel | 5 column base - (5) 10" x 10" cast spider

LEVELING GLIDES: 1-3/8" diameter plastic with steel threaded inserts

FINISH: Stock color is Black

PACKAGING: 4 column bases are packaged in 1 box | 5 column bases are packaged in 2 boxes

OPTIONS

BAR HEIGHT: Specify -42. 4 column base only.

CASTERS: Specify -C. 2" dual-wheel locking caster, 112 lbs capacity

SELF-LEVELING GLIDES: Specify -SLG

4 COLUMN X-BASES | 5 COLUMN X-BASES | PRICING

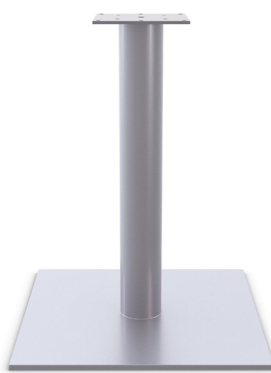
| PART # | UNIT HEIGHT | COLUMN DIAMETER | BASE SPREAD | MOUNTING PLATE SIZE | RECOMMENDED TOP SIZE | NET WEIGHT | LIST PRICE |
|-----------|------------------------------------|-----------------|-------------|---------------------|----------------------|------------|------------|
| 4XL-38 | 27.75" | 2" | 38" x 38" | (4) 4" x 4" | 42" - 60" Rd. | 34 lbs | 612 |
| | | | | | 42" - 60" Sq. | | |
| 4XL-38-C | 27.75" | 2" | 38" x 38" | (4) 4" x 4" | 42" - 60" Rd. | 34 lbs | 696 |
| | | | | | 42" - 60" Sq. | | |
| 4XL-38-42 | 40.75" | 2" | 38" x 38" | (4) 4" x 4" | 42" - 60" Rd. | 44 lbs | 893 |
| | | | | | 42" - 60" Sq. | | |
| 5XL-48 | 27.75" | 2" | 48" x 48" | (5) 10" x 10" | 60" - 84" Rd. | 37 lbs | 666 |
| | | | | | 60" - 72" Sq. | | |
| 5XL-48-C | 27.75" | 2" | 48" x 48" | (5) 10" x 10" | 60" - 84" Rd. | 37 lbs | 750 |
| | | | | | 60" - 72" Sq. | | |
| -CUSTHT1 | For height between 5" - 27.75" | | | | | | + 304 |
| -CUSTHT2 | For height between 27.75" - 40.75" | | | | | | + 586 |
| -SLG | Self-leveling Glides | | | | | | + 100 |

SIENNA ROUND & SQUARE BASES

Sienna bases provide a modern look for offices, breakrooms, and training rooms. These bases feature a 3" column with 3/8" thick laser-cut solid steel and flush-mounted adjustable glides.



C3-22FPR



C342-2222FPS



Foot Ring Option

■ FEATURES

| | |
|------------------|--|
| UNIT HEIGHT: | 27.75" 40.75" |
| WELDED | |
| MOUNTING PLATE: | 8" x 8" x 7/32" steel |
| COLUMN: | 3" diameter |
| LEVELING GLIDES: | 3/4" diameter plastic for leveling on uneven floors |
| FINISH: | Stock colors are Black (-BL) and Metallic Silver (-MS) |
| PACKAGING: | Bases are packed in 2 boxes; priced individually Footring is packaged 1 per box |

■ OPTIONS

| | |
|-----------------------|---|
| CUSTOM HEIGHT: | Specify -CUSTHT1 for height between 5" - 27.75" Specify -CUSTHT2 for height between 27.75" - 40.75" |
| SELF-LEVELING GLIDES: | Specify -SLG Round bases require 5 Self-leveling Glides Square bases require 4 Self-leveling Glides |
| FOOT RING: | Specify -FR-3.12" high |

■ SIENNA ROUND & SQUARE BASES PRICING

| PLATE TYPE | PART # | COLUMN DIAMETER | UNIT HEIGHT | PLATE SIZE | RECOMMENDED TOP DEPTH | NET WEIGHT | LIST PRICE (EACH) |
|------------|---------------------------------------|------------------------------------|-------------|------------|-----------------------|------------|-------------------|
| ROUND | C3-18FPR | 3" | 27.75" | 18" D | 24"- 30" | 38 lbs | 535 |
| | C3-22FPR | 3" | 27.75" | 22" D" | 30"- 36" | 51 lbs | 643 |
| | C3-26FPR | 3" | 27.75" | 26" D" | 36"- 48" | 67 lbs | 772 |
| | C342-18FPR bar height | 3" | 40.75" | 18" D | 24"- 30" | 41 lbs | 602 |
| | C342-22FPR bar height | 3" | 40.75" | 22" D" | 30"- 36" | 54 lbs | 710 |
| | C342-26FPR bar height | 3" | 40.75" | 26" D" | 36"- 48" | 70 lbs | 839 |
| | C342-18FPR-FR with foot ring | 3" | 40.75" | 18" D | 24"- 30" | 47 lbs | 712 |
| | C342-22FPR-FR with foot ring | 3" | 40.75" | 22" D" | 30"- 36" | 60 lbs | 820 |
| | C342-26FPR-FR with foot ring | 3" | 40.75" | 26" D" | 36"- 48" | 76 lbs | 949 |
| | -SLG | Self-leveling Glides | | | | | + 30 |
| SQUARE | C3-1818FPS | 3" | 27.75" | 18" x 18" | 24"- 30" | 46 lbs | 535 |
| | C3-2222FPS | 3" | 27.75" | 22" x 22" | 30"- 36" | 65 lbs | 643 |
| | C3-2626FPS | 3" | 27.75" | 26" x 26" | 36"- 48" | 86 lbs | 772 |
| | C342-1818FPS bar height | 3" | 40.75" | 18" x 18" | 24"- 30" | 49 lbs | 602 |
| | C342-2222FPS bar height | 3" | 40.75" | 22" x 22" | 30"- 36" | 68 lbs | 710 |
| | C342-2626FPS bar height | 3" | 40.75" | 26" x 26" | 36"- 48" | 89 lbs | 839 |
| | C342-1818FPS-FR with foot ring | 3" | 40.75" | 18" x 18" | 24"- 30" | 55 lbs | 712 |
| | C342-2222FPS-FR with foot ring | 3" | 40.75" | 22" x 22" | 30"- 36" | 74 lbs | 820 |
| | C342-2626FPS-FR with foot ring | 3" | 40.75" | 26" x 26" | 36"- 48" | 95 lbs | 949 |
| | -SLG | Self-leveling Glides | | | | | + 24 |
| OPTIONS | -CUSTHT1 | For height between 5" - 27.75" | | | | | + 76 |
| | -CUSTHT2 | For height between 27.75" - 40.75" | | | | | + 143 |

Sienna X bases were designed for breakroom or conference room applications. The floor plate is heavy-duty 3/8" thick laser-cut solid steel.



FEATURES

| | |
|------------------------|---|
| UNIT HEIGHT: | 27.75" 40.75" |
| WELDED MOUNTING PLATE: | 8" x 8" x 7/32" steel |
| COLUMN: | Single column - 3" diameter 4 columns - 3" diameter |
| LEVELING GLIDES: | 2-3/8" diameter plastic with steel threaded inserts |
| FINISH: | Stock colors are Black (-BL) and Metallic Silver (-MS) |
| PACKAGING: | Single column X base is packaged in 2 boxes 4 column X base is packaged in 5 boxes |

OPTIONS

| | |
|-----------------------|--|
| CUSTOM HEIGHT: | Specify -CUSTHT1 for height between 5" - 27.75" Specify -CUSTHT2 for height between 27.75" - 40.75" |
| BAR HEIGHT: | Specify -42 |
| CASTERS: | Specify -SC . 3" locking skate wheel caster with 112 lbs capacity |
| SELF LEVELING GLIDES: | Specify -SLG |

■ SIENNA X BASES PRICING

| COLUMNS | HEIGHT | PART # | COLUMN DIAMETER | UNIT HEIGHT | BASE SPREAD | RECOMMENDED TOP SIZE | NET WEIGHT | LIST PRICE (EACH) |
|---------|----------|---------------|------------------------------------|-------------|-------------|----------------------|------------|-------------------|
| 1 | STANDARD | C3-2626FPP | 3" | 27.75" | 26" x 26" | 30" - 36" DIA | 26 lbs | 612 |
| | | C3-3232FPP | 3" | 27.75" | 32" x 32" | 36" - 42" DIA | 32 lbs | 693 |
| | | C3-3636FPP | 3" | 27.75" | 36" x 36" | 42" - 48" DIA | 39 lbs | 806 |
| | BAR | C342-2626FPP | 3" | 40.75" | 26" x 26" | 30" - 36" DIA | 46 lbs | 679 |
| | | C342-3232FPP | 3" | 40.75" | 32" x 32" | 36" - 42" DIA | 49 lbs | 760 |
| | | C342-3636FPP | 3" | 40.75" | 36" x 36" | 42" - 48" DIA | 65 lbs | 873 |
| | CUSTOM | -CUSTHT1 | For height between 5" - 27.75" | | | | | + 76 |
| | | -CUSTHT2 | For height between 27.75" - 40.75" | | | | | + 143 |
| 4 | STANDARD | 4C3-4848FPP | 3" | 27.75" | 48" x 48" | 54" - 72" RD | 90 lbs | 1,109 |
| | BAR | 4C342-4848FPP | 3" | 40.75" | 48" x 48" | 54" - 72" DIA | 100 lbs | 1,377 |
| | CUSTOM | -CUSTHT1 | For height between 5" - 27.75" | | | | | + 304 |
| | | -CUSTHT2 | For height between 27.75" - 40.75" | | | | | + 572 |
| OPTIONS | CASTERS | -SC | Skate Casters | | | | | + 144 |
| | GLIDES | -SLG | Self-leveling Glides | | | | | + 30 |



Sienna Café Power low-profile bases are an authentic meeting solution conveniently allowing to charge via power or USB; a power cord runs through the base column for a clean look. Power is sold separately.

The effortless elegance of Node's clean, flush-mount design is sure to complement a wide range of aesthetics, stylish plated or powder coat finish belies a robust, die-cast construction. Refined but versatile, Node offers a range of power, data, and USB configurations.



Node Receptacle



CP-22FPR-3



CP-2626FPP

FEATURES

| | |
|------------------------|--|
| UNIT HEIGHT: | 27.75" |
| WELDED MOUNTING PLATE: | 12.5" x 7" x 2.5" steel |
| COLUMN: | 3" diameter |
| LEVELING GLIDES: | 2 3/8" diameter plastic with steel threaded inserts |
| FINISH: | Stock: Black (-BL) & Metallic Silver (-MS) |
| PACKAGING: | Bases are packed in 4 boxes |
| ELECTRICAL: | 15 Amp power per outlet and 2 Amp per USB port, 120" power cord Black or Silver |

BASE OPTIONS

| | |
|-----------------------|---|
| BAR HEIGHT: | Specify -42 |
| SELF LEVELING GLIDES: | Specify -SLG Round bases use 5 X bases use 4 |
| FOOT RING: | Specify -FR-3. 12" high |

ELECTRICAL OPTIONS

- 2-Power
- 1-Power / 1USB port

■ SIENNA CAFÉ POWER BASES PRICING

| | PART # | COLUMN DIAMETER | UNIT HEIGHT | PLATE/ BASE SPREAD | RECOMMENDED TOP SIZE | NET WEIGHT | LIST PRICE (EACH) |
|---------------|--------------------------|----------------------|-------------|-----------------------|----------------------|------------|-------------------|
| ROUND BASE | CP-22FPR-3 | 3" | 27.75" | 22" D | 30"- 36" | 51 lbs | 693 |
| | CP-22FPR-4 | 4" | 27.75" | 26" D | 30"- 36" | 55 lbs | 849 |
| | CP-22FPR-3-42 bar height | 3" | 40.75" | 22" D | 30"- 36" | 70 lbs | 760 |
| | CP-22FPR-4-42 bar height | 4" | 40.75" | 26" D | 30"- 36" | 74 lbs | 916 |
| | -SLG | Self-leveling Glides | | | | | + 30 |

| | | | | | | | |
|-----------|--------------------------|----------------------|--------|-----------|----------|--------|------|
| X BASE | CP-2626FPP | 3" | 27.75" | 26" x 26" | 30"- 36" | 26 lbs | 691 |
| | CP-3232FPP | 3" | 27.75" | 32" x 32" | 36"- 42" | 32 lbs | 769 |
| | CP-3636FPP | 3" | 27.75" | 36" x 36" | 42"- 48" | 39 lbs | 913 |
| | CP-2626FPP-42 bar height | 3" | 40.75" | 26" x 26" | 30"- 36" | 46 lbs | 758 |
| | CP-3232FPP-42 bar height | 3" | 40.75" | 32" x 32" | 36"- 42" | 49 lbs | 836 |
| | CP-3636FPP-42 bar height | 3" | 40.75" | 36" x 36" | 42"- 48" | 65 lbs | 980 |
| | -SLG | Self-leveling Glides | | | | | + 30 |

| | | | | | | | |
|---------|-------|--|-----|--|--|-------|-------|
| OPTIONS | -FR-3 | | 12" | | | 6 lbs | + 116 |
|---------|-------|--|-----|--|--|-------|-------|

| | PART # | COLOR | CONFIGURATION | LIST PRICE (EACH) |
|------------|-----------------|-----------------|----------------------|-------------------|
| ELECTRICAL | NODE-1PU-120-MS | Metallic Silver | 1 Power / USB Duplex | + 267 |
| | NODE-1PU-120-B | Black | 1 Power / USB Duplex | + 267 |
| | NODE-2PU-120-MS | Metallic Silver | 2 Power | + 188 |
| | NODE-2PU-120-B | Black | 2 Power | + 188 |

SIENNA RECTANGLE BASE

Sienna Rectangle bases were designed for conference tables and collaboration applications. This base features two 3" diameter columns and a heavy-duty solid steel rectangular floor plate 3/8" thick.

FEATURES

| | |
|------------------|--|
| UNIT HEIGHT: | 27.75" 40.75 |
| WELDED | |
| MOUNTING PLATE: | 6" x 6" x 7/32" steel |
| COLUMN: | 3" diameter |
| LEVELING GLIDES: | 3/4" diameter plastic with steel threaded inserts |
| FINISH: | Stock colors are Black (-BL) and Metallic Silver (-MS) |
| PACKAGING: | Base is packaged in 3 boxes |



2C3-2230FPR

OPTIONS

| | |
|-----------------------|--|
| CUSTOM HEIGHT: | Specify -CUSTHT1 for height between 5" - 27.75" Specify -CUSTHT2 for height between 27.75" - 40.75" |
| BAR HEIGHT: | Specify -42 |
| SELF LEVELING GLIDES: | Specify -SLG |

SIENNA RECTANGLE BASE PRICING

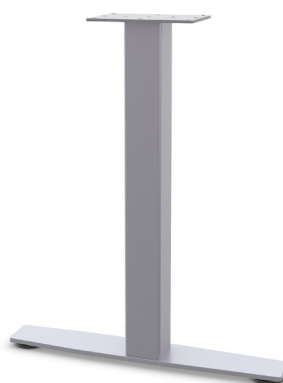
| BASE HEIGHT | # OF COLUMNS | PART # | COLUMN DIAMETER | UNIT HEIGHT | PLATE SIZE | RECOMMENDED TOP SIZE | NET WEIGHT | LIST PRICE (EA) |
|---------------|--------------|----------------|------------------------------------|-------------|------------|----------------------|------------|-----------------|
| STANDARD | 2 | 2C3-2230FPR | 3" | 27.75" | 22" x 30" | 30"-36" x 42" - 72" | 92 lbs | 943 |
| BAR HEIGHT | 2 | 2C3-2230FPR-42 | 3" | 40.75" | 22" x 30" | 30"-36" x 42" - 72" | 101 lbs | 1,076 |
| CUSTOM HEIGHT | 2 | -CUSTHT1 | For height between 5" - 27.75" | | | | | + 152 |
| | 2 | -CUSTHT2 | For height between 27.75" - 40.75" | | | | | + 286 |
| GLIDES | | -SLG | Self-leveling Glides | | | | | + 36 |

SIENNA T-LEG & C-LEG

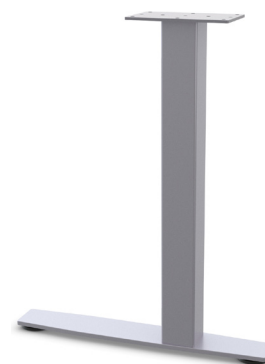
Sienna T-Leg and C-Leg feature an elegant foot design for conference or training room tables. The bases are constructed with 3" diameter columns and a floor plate made of heavy-duty 3/8" thick laser-cut solid steel.



2C3-2LGTL-36



LGTL-24



LGCL-24

■ FEATURES

| | |
|------------------|---|
| UNIT HEIGHT: | 27.75" 40.75" |
| WELDED | Single column 5" x 8" |
| MOUNTING PLATE: | Dual column 6" x 6" |
| COLUMN: | Single column 2-3/4" x 2-3/4" square Dual column 3" diameter |
| LEVELING GLIDES: | 2-3/8" diameter plastic for leveling on uneven floors |
| FINISH: | Stock colors are Black (-BL) and Metallic Silver (-MS) |
| PACKAGING: | 2-floor plates per box Single column bases are packaged in 2 boxes Dual column bases are packaged in 3 boxes Priced individually |

■ OPTIONS

| | |
|------------------------------|--|
| CUSTOM HEIGHT | Specify -CUSTHT1 for height between 5" - 27.75" |
| FOR 1 & 2 COLUMN: | Specify -CUSTHT2 for height between 27.75" - 40.75" |
| BAR HEIGHT FOR 1 & 2 COLUMN: | Specify -42. |
| CASTERS: | Specify -SC. 2.5" locking skate wheel caster with 112 lbs capacity |
| SELF LEVELING GLIDES: | Specify -SLG |

■ SIENNA T-LEG & C-LEG BASE PRICING

| LEG TYPE | LEG HEIGHT | PART # | UNIT HEIGHT | BASE SPREAD | RECOMMENDED TOP SIZE | NET WEIGHT | LIST PRICE (EACH) |
|---------------------|-----------------|------------|------------------------------------|-------------|--------------------------|------------|-------------------|
| T-LEG SINGLE COLUMN | STANDARD HEIGHT | LGTL-18 | 27.75" | 16" | 18" - 20"D x 24" - 120"W | 15 lbs | 252 |
| | | LGTL-24 | 27.75" | 22" | 24" D x 36" - 84"W | 17 lbs | 273 |
| | | LGTL-30 | 27.75" | 26" | 30" - 36"D x 36" - 84"W | 18 lbs | 286 |
| | | LGTL-36 | 27.75" | 32" | 36"D x 42" - 96"W | 20 lbs | 322 |
| | BAR HEIGHT | LGTL-18-42 | 40.75" | 16" | 18" - 20"D x 24" - 120"W | 18 lbs | 319 |
| | | LGTL-24-42 | 40.75" | 22" | 24" D x 36" - 84"W | 20 lbs | 340 |
| | | LGTL-30-42 | 40.75" | 26" | 30" - 36"D x 36" - 84"W | 21 lbs | 352 |
| | | LGTL-36-42 | 40.75" | 32" | 36"D x 42" - 96"W | 23 lbs | 388 |
| C-LEG SINGLE COLUMN | STANDARD HEIGHT | LGCL-24 | 27.75" | 22" | 24"D x 36" - 84"W | 17 lbs | 273 |
| | | LGCL-30 | 27.75" | 26" | 30" - 36"D x 36" - 84"W | 18 lbs | 286 |
| | BAR HEIGHT | LGCL-24-42 | 40.75" | 22" | 24"D x 36" - 84"W | 20 lbs | 340 |
| | | LGCL-30-42 | 40.75" | 26" | 30" - 36"D x 36" - 84"W | 21 lbs | 353 |
| OPTIONS | CUSTOM HEIGHT | -CUSTHT1 | For height between 5" - 27.75" | | | | + 76 |
| | | -CUSTHT2 | For height between 27.75" - 40.75" | | | | + 143 |
| | CASTERS | -SC | Skate Casters | | | | + 72 |
| | GLIDES | -SLG | Self-Leveling Glides | | | | + 12 |

■ SIENNA 2T-LEG BASE PRICING

| LEG TYPE | LEG HEIGHT | PART # | UNIT HEIGHT | BASE SPREAD | RECOMMENDED TOP SIZE | NET WEIGHT | LIST PRICE (EACH) |
|-------------------|-----------------|-----------------|------------------------------------|-------------|-------------------------|------------|-------------------|
| T-LEG DUAL COLUMN | STANDARD HEIGHT | 2C3-2LGTL-36 | 27.75" | 32" | 30" - 36"D x 42" - 96"W | 29 lbs | 454 |
| | BAR HEIGHT | 2C3-2LGTL-36-42 | 40.75" | 32" | 30" - 36"D x 42" - 96"W | 35 lbs | 588 |
| OPTIONS | CUSTOM HEIGHT | -CUSTHT1 | For height between 5" - 27.75" | | | | + 152 |
| | | -CUSTHT2 | For height between 27.75" - 40.75" | | | | + 286 |
| | CASTERS | -SC | Skate Casters | | | | + 72 |
| | GLIDES | -SLG | Self-leveling Glides | | | | + 12 |

SQUARE END BASE

Fabricated 14 gauge 2" x 1" rectangular tubular steel with threaded inserts for glides.
Welded construction. Bases mount flush with the table edge.



RSSB-24



Detail: base placement

■ FEATURES

| | |
|------------------|---|
| UNIT HEIGHT: | 27.75" |
| WELDED | |
| MOUNTING PLATE: | 4-3/4" x 3-1/2" x 7/32" |
| COLUMN: | 14 gauge steel, 2" x 1" rectangular tube profile |
| LEVELING GLIDES: | 1-3/8" diameter nylon glide |
| FINISH: | Stock color is Metallic Silver |
| PACKAGING: | Bases are packaged 2 per box, priced individually |

■ SQUARE END BASE PRICING

| PART # | BASE SPREAD | RECOMMENDED TOP DEPTH | NET WEIGHT | LIST PRICE (EACH) |
|----------------|-------------|-----------------------|------------|-------------------|
| RSSB-24 | 24" | 24" | 14 lbs | 344 |
| RSSB-30 | 30" | 30" | 15 lbs | 374 |

SQUARE H-LEG

Fabricated 14 gauge 2" x 1" rectangular tubular steel with rectangular adjustable glides.
Welded construction. Bases mount flush with the table edge.



RSHL-24



Detail: base placement



Detail: rectangular adjustable glide

FEATURES

| | |
|------------------------|---|
| UNIT HEIGHT: | 27.75" |
| WELDED MOUNTING PLATE: | 4-3/4" x 3-1/2" x 7/32" steel |
| COLUMN: | 14 gauge steel, 2" x 1" rectangular tube profile |
| LEVELING GLIDES: | 1-3/8" diameter nylon glide |
| FINISH: | Stock color is Metallic Silver |
| PACKAGING: | Bases are packaged 2 per box, priced individually |

SQUARE H-LEG PRICING

| PART # | BASE SPREAD | RECOMMENDED TOP DEPTH | NET WEIGHT | LIST PRICE (EACH) |
|---------|-------------|-----------------------|------------|-------------------|
| RSHL-24 | 24" | 24" | 14 lbs | 304 |
| RSHL-30 | 30" | 30" | 15 lbs | 344 |

STRUCTURE T-LEG & C-LEG

Structure bases present a clean and elegant look that complements various interiors. They feature 14 gauge 2" x 1" rectangular steel, bolted welded construction, and threaded inserts for glides.



Caster



RS2T-24



RS2T-24-C



RS2C-24

FEATURES

| | |
|------------------------|--|
| UNIT HEIGHT: | 27.75" |
| WELDED MOUNTING PLATE: | 5" x 11" x 7/32" steel |
| COLUMN: | 14 gauge steel, 2" x 1" rectangular tube profile |
| LEVELING GLIDES: | 1-3/8" diameter nylon glide |
| CASTERS: | 1-3/4" dual-wheel locking caster with silver cap, 112 lbs capacity |
| FINISH: | Stock color is Metallic Silver |
| PACKAGING: | Bases are packaged 2 per box, priced individually |

OPTIONS

| | |
|----------|-------------|
| CASTERS: | Specify -C2 |
|----------|-------------|

STRUCTURE T-LEG & C-LEG PRICING

| LEG TYPE | PART # | BASE SPREAD | RECOMMENDED TOP SIZE | NET WEIGHT | LIST PRICE (EACH) |
|----------|---------|-------------|----------------------|------------|-------------------|
| T-LEG | RS2T-18 | 16" | 18" D x 48" - 84W | 10 lbs | 251 |
| | RS2T-24 | 22" | 24" D x 36" - 84W | 11 lbs | 259 |
| | RS2T-30 | 26" | 30" D x 36" - 84W | 12 lbs | 268 |
| C-LEG | RS2C-24 | 22" | 24" D x 36" - 84W | 11 lbs | 236 |
| | RS2C-30 | 26" | 30" D x 36" - 84W | 12 lbs | 268 |

STRUCTURE POST LEG

Fabricated 14 gauge 2" x 1" rectangular tubular steel post legs. Welded construction.

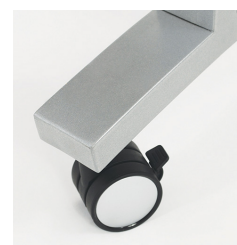
FEATURES

| | |
|------------------|--|
| UNIT HEIGHT: | 27.75" |
| WELDED | |
| MOUNTING PLATE: | 4" x 4" x 7/32" |
| COLUMN: | 14 gauge steel, 2" x 1" rectangular tube profile |
| LEVELING GLIDES: | Rectangular adjustable glide |
| CASTERS: | 1-3/4" dual-wheel locking caster with silver cap, 112 lbs capacity |
| FINISH: | Stock color is Metallic Silver |
| PACKAGING: | Bases are packaged 4 per box, priced individually |



Detail: rectangular adjustable glide

RSP



Caster

STRUCTURE POST LEG PRICING

| PART # | UNIT HEIGHT | COLUMN SIZE | NET WEIGHT | LIST PRICE (EACH) |
|----------------------------|-------------|-------------|------------|-------------------|
| RSP | 27.75" | 2" x 1" | 5 lbs | 113 |
| RSP-C2 with casters | 27.75" | 2" x 1" | 5 lbs | 118 |

STRUCTURE 4X-BASE

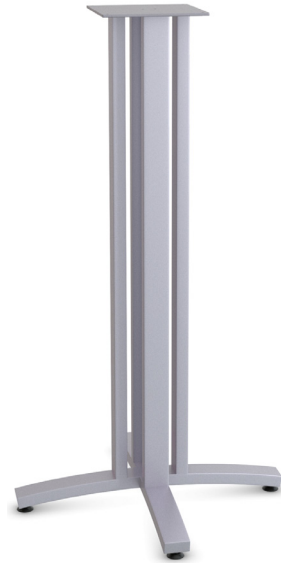
Structure bases present a clean and elegant look that complements various interiors. Structure X-Base features 14 gauge 2" x 1" rectangular columns welded to a mounting plate. The one-piece foot is bolted to a column and features threaded inserts for glides.



RS4X-24-16



RS4X-24



RS4X-24-42

■ FEATURES

| | |
|---------------------------|---|
| UNIT HEIGHT: | 14.75" Occasional Height 27.75" Standard Height 40.75" Bar Height |
| WELDED MOUNTING PLATE: | 8" x 8" x 7/32" |
| COLUMN: | 14 gauge steel, (4) 2" x 1" rectangular tube profile |
| LEVELING GLIDES: | 1-3/8" diameter nylon glide |
| FINISH: | Stock color is Metallic Silver |
| PACKAGING: | Bases are packaged in 2 boxes |

■ STRUCTURE 4X BASE PRICING

| BASE TYPE | PART # | UNIT HEIGHT | BASE SPREAD | RECOMMENDED TOP SIZE | NET WEIGHT | LIST PRICE (EACH) |
|-------------------|------------|-------------|-------------|----------------------|------------|-------------------|
| OCCASIONAL HEIGHT | RS4X-24-16 | 14.75" | 22" x 22" | 24" | 12 lbs | 670 |
| | RS4X-30-16 | 14.75" | 26" x 26" | 30" | 13 lbs | 696 |
| | RS4X-36-16 | 14.75" | 32" x 32" | 36" | 14 lbs | 761 |
| | RS4X-42-16 | 14.75" | 38" x 38" | 42" - 48" | 15 lbs | 832 |
| STANDARD HEIGHT | RS4X-24 | 27.75" | 22" x 22" | 24" | 16 lbs | 727 |
| | RS4X-30 | 27.75" | 26" x 26" | 30" | 17 lbs | 752 |
| | RS4X-36 | 27.75" | 32" x 32" | 36" | 18 lbs | 817 |
| | RS4X-42 | 27.75" | 38" x 38" | 42" - 48" | 19 lbs | 889 |
| BAR HEIGHT | RS4X-24-42 | 40.75" | 22" x 22" | 24" | 21 lbs | 798 |
| | RS4X-30-42 | 40.75" | 26" x 26" | 30" | 22 lbs | 824 |
| | RS4X-36-42 | 40.75" | 32" x 32" | 36" | 23 lbs | 889 |
| | RS4X-42-42 | 40.75" | 38" x 38" | 42" - 48" | 24 lbs | 960 |

STRUCTURE CUBE

Structure bases present a clean and elegant look that complements various interiors. Structure Cube base features 14 gauge 2" x 1" rectangular steel, bolted/welded construction, and threaded inserts for glides.



RSXO-36

FEATURES

| | |
|------------------------|--|
| UNIT HEIGHT: | 27.75" |
| WELDED MOUNTING PLATE: | 4" x 4" x 7/32" |
| COLUMN: | 14 gauge steel, 2" x 1" rectangular tube profile |
| LEVELING GLIDES: | 1-3/8" diameter nylon glide |
| FINISH: | Stock color is Metallic Silver |
| PACKAGING: | Bases are packaged 1 per box |

STRUCTURE CUBE PRICING

| PART # | BASE SPREAD | RECOMMENDED TOP SIZE | NET WEIGHT | LIST PRICE (EACH) |
|----------------|-------------|----------------------|------------|-------------------|
| RSXO-32 | 32" x 32" | 36" - 42" | 30 lbs | 591 |
| RSXO-36 | 36" x 36" | 48" - 54" | 31 lbs | 662 |
| RSXO-42 | 42" x 42" | 60" - 72" | 35 lbs | 752 |

SPRING CLIP HEIGHT ADJUSTABLE BASES

Bolted construction 14 gauge tubular steel. Legs adjust in 1" increments by depressing the spring clip pin to release the outer column for height adjustment. When realigned with the outer column holes, the pin snaps back into a locking position. A thumbscrew locks the column in place. A thumbscrew locks the column in place.



■ FEATURES

| | |
|------------------------|---|
| ADJUSTMENT RANGE: | 24.75" to 34.75" |
| WELDED MOUNTING PLATE: | 7/23" steel |
| COLUMN: | 2" diameter on outer column |
| LEVELING GLIDES: | 1-3/8" diameter plastic with steel threaded inserts |
| FINISH: | Stock color is Black |
| PACKAGING: | Bases are packaged 2 per box Priced individually |

■ OPTIONS

| | |
|----------|--|
| CASTERS: | The base height will increase 2" Specify -C CL-AH, 2CL-AH and 2TL-AH bases Specify - 1ATL-AH |
|----------|--|

■ SPRING CLIP HEIGHT ADJUSTABLE BASES PRICING

| LEG TYPE | PART # | BASE SPREAD | MOUNTING PLATE SIZE | RECOMMENDED TOP DEPTH | NET WEIGHT | LIST PRICE |
|-------------------|-----------|-------------|---------------------|-----------------------|------------|------------|
| C-LEG | CL-18-AH | 16" | 5" x 8" | 18" - 22" | 9 lbs | 319 |
| | CL-24-AH | 22" | 5" x 8" | 24" - 28" | 10 lbs | 323 |
| | CL-30-AH | 26" | 5" x 8" | 28" - 30" | 11 lbs | 327 |
| | -C | Caster | | | | + 42 |
| T-LEG | TL-18-AH | 16" | 5" x 8" | 18" - 20" | 9 lbs | 319 |
| | TL-20-AH | 18" | 5" x 8" | 20" - 22" | 9 lbs | 319 |
| | TL-22-AH | 20" | 5" x 8" | 22" - 24" | 10 lbs | 323 |
| | TL-24-AH | 22" | 5" x 8" | 24" - 28" | 10 lbs | 323 |
| | TL-30-AH | 26" | 5" x 8" | 28" - 30" | 10 lbs | 327 |
| | -C | Caster | | | | + 42 |
| C-LEG DUAL COLUMN | 2CL-24-AH | 22" | (2) 5" x 8" | 18" - 22" | 11 lbs | 512 |
| | 2CL-30-AH | 26" | (2) 5" x 8" | 24" - 28" | 9 lbs | 515 |
| | -C | Caster | | | | + 42 |
| T-LEG DUAL COLUMN | 2TL-24-AH | 22" | (2) 5" x 8" | 20" - 22" | 9 lbs | 512 |
| | 2TL-30-AH | 26" | (2) 5" x 8" | 22" - 24" | 10 lbs | 515 |
| | 2TL42-AH | 36" | (2) 5" x 8" | 24" - 28" | 10 lbs | 538 |
| | 2TL-48-AH | 48" | (2) 5" x 8" | 28" - 30" | 10 lbs | 552 |
| | -C | Caster | | | | + 42 |

PATRIOT ELECTRIC HEIGHT ADJUSTABLE BASE

The Patriot Electric base offers an optimal solution for any adjustable height requirement in the office. This GSA-approved base is an excellent first step towards improving the efficiency and well-being of your organization while remaining budget-conscious.



PAT-3STG-24T



2-stage



3-stage



Up/down switch
(standard)



Programmable
digital switch

FEATURES

| | |
|-------------|---|
| FEET: | T-Leg C-Leg |
| COLUMN: | 2-stage base: height range 27" - 46" with 19" stroke 3-stage base: height range 24" - 47" with 24" stroke |
| CONTROLLER: | Up-down switch comes standard or optional programmable switch |
| FINISH: | Stock colors are Black, specify -B; and Metallic Silver specify -MS Additional colors available with an extended lead time |
| PACKAGING: | 2 column base is packaged in 1 box, 3 column bases are packed in 3 boxes |

ELECTRICAL INFORMATION

| | | | |
|----------------------|------------|--------------------|-----------------|
| MOTOR: | Dual motor | MOTOR NOISE: | <43 dB |
| MAX LIFTING SPEED: | 1-2/8"/sec | POWER CONSUMPTION: | .3W |
| OVERLOAD PROTECTION: | 200 lbs | FUNCTIONS: | Soft-Start-Stop |

OPTIONS

| | |
|----------------------|---|
| CONTROLLER: | Specify PAT-DIG-HS for Digital Display with Memory Preset |
| STEEL TABLE SUPPORT: | 42", 54" |
| CASTERS: | Specify PAT-C |



GS-28F-0015W

Patriot Electric Height Adjustable Bases Pricing

| STAGE | PART # | BASE TYPE | # OF COLUMNS | BASE SPREAD | RECOMMENDED TOP SIZE | NET WEIGHT | LIST PRICE (EACH) |
|---------|---------------------|------------------------------------|--------------|-------------|----------------------|------------|-------------------|
| 2-STAGE | PAT-2STG-24T | T-Leg | 2 | 22" | 24" D x 48-84" W | 55 lbs | 1,557 |
| | PAT-2STG-30T | T-Leg | 2 | 28" | 30" D x 48-84" W | 55 lbs | 1,571 |
| | PAT-2STG-3COL-24T | T-Leg | 3 | 22" | 24" D x 60-72" W | 80 lbs | 2,394 |
| | PAT-2STG-3COL-30T | T-Leg | 3 | 28" | 30" D x 60-72" W | 80 lbs | 2,408 |
| | PAT-2STG-24C | C-Leg | 2 | 22" | 24" D x 48-84" W | 55 lbs | 1,557 |
| | PAT-2STG-30C | C-Leg | 2 | 28" | 30" D x 48-84" W | 55 lbs | 1,571 |
| | PAT-2STG-3COL-24C | C-Leg | 3 | 22" | 24" D x 60-72" W | 80 lbs | 2,394 |
| | PAT-2STG-3COL-30C | C-Leg | 3 | 28" | 30" D x 60-72" W | 80 lbs | 2,408 |
| 3-STAGE | PAT-3STG-24T | T-Leg | 2 | 22" | 24" D x 48-84" W | 55 lbs | 1,688 |
| | PAT-3STG-30T | T-Leg | 2 | 28" | 30" D x 48-84" W | 55 lbs | 1,701 |
| | PAT-3STG-3COL-24T | T-Leg | 3 | 22" | 24" D x 60-72" W | 80 lbs | 2,539 |
| | PAT-3STG-3COL-30T | T-Leg | 3 | 28" | 30" D x 60-72" W | 80 lbs | 2,553 |
| | PAT-3STG-24C | C-Leg | 2 | 22" | 24" D x 48-84" W | 55 lbs | 1,688 |
| | PAT-3STG-30C | C-Leg | 2 | 28" | 30" D x 48-84" W | 55 lbs | 1,701 |
| | PAT-3STG-3COL-24C | C-Leg | 3 | 22" | 24" D x 60-72" W | 80 lbs | 2,539 |
| | PAT-3STG-3COL-30C | C-Leg | 3 | 28" | 30" D x 60-72" W | 80 lbs | 2,553 |
| OPTIONS | PAT-DIG-HS | Digital Display with Memory Preset | | | | | + 105 |
| | STEEL TABLE SUPPORT | 42" | | | | | + 81 |
| | | 54" | | | | | + 92 |
| | PAT-C | Casters | | | | | + 140 |

Patriot Electric & Liberty Electric Bases Only 1 - 3 \$55 each | 4-15 \$33 each | 16 - 50 \$27 each | 51 + \$16 each
 FOB: Alpharetta, GA; PPD & ADD

HIKE ELECTRIC HEIGHT ADJUSTABLE BASE



| PART # | BASE TYPE | # OF COL | BASE SPREAD | RECOMMENDED TOP SIZE | NET WT | LIST PRICE (EACH) |
|----------------|-----------|----------|-------------|----------------------|--------|-------------------|
| HIKE-24 | T-Leg | 2 | 22.24" | 24" D x 48-72" W | 55 lbs | 814 |
| HIKE-30 | T-Leg | 2 | 28.24" | 30" D x 48-72" W | 60 lbs | 903 |

Metallic Silver specify -MS, Black, specify -B

FOLDING T-LEG & C-LEG

The molded folding mechanism is operated by a lever that can be pushed up by hand or foot, making a positive connection in both open and closed positions allowing legs to lay flat when the table is 60" or longer. Rising brackets must be used to fold smaller tables.



CL-30-GFM



TL-30-GFM

FEATURES

| | |
|----------------------|--|
| UNIT HEIGHT: | 27.75" |
| COLUMN: | 2" diameter |
| MECHANISM DIMENSION: | 9" x 8" x 3" |
| RISING BRACKET: | Specify -RISER, is necessary for folding tables under 60" long |
| LEVELING GLIDES: | 1-3/8" diameter plastic with steel threaded inserts |
| FINISH: | Stock color is Black |
| PACKAGING: | Bases are packaged in multiple boxes, priced individually |

OPTIONS

| | |
|----------|---|
| CASTERS: | Specify -C. 2" dual-wheel locking caster 112 lbs capacity |
|----------|---|

FOLDING T-LEG & C-LEG BASES PRICING

| | PART # | UNIT HEIGHT | COLUMN DIAMETER | BASE SPREAD | RECOMMENDED TOP DEPTH | NET WEIGHT | LIST PRICE |
|---------|-----------|-------------|-----------------|-------------|-----------------------|------------|------------|
| C-LEG | CL-18-GFM | 27.75" | 2" | 16" | 18" - 22" | 8.5 lbs | 472 |
| | CL-24-GFM | 27.75" | 2" | 22" | 24" - 28" | 9.5 lbs | 475 |
| | CL-30-GFM | 27.75" | 2" | 26" | 28" - 30" | 10 lbs | 480 |
| T-LEG | TL-18-GFM | 27.75" | 2" | 16" | 18" - 20" | 8.5 lbs | 472 |
| | TL-20-GFM | 27.75" | 2" | 18" | 20" - 22" | 8.5 lbs | 472 |
| | TL-22-GFM | 27.75" | 2" | 20" | 22" - 24" | 9.5 lbs | 476 |
| | TL-24-GFM | 27.75" | 2" | 22" | 24" - 28" | 9.5 lbs | 476 |
| | TL-30-GFM | 27.75" | 2" | 26" | 28" - 30" | 10 lbs | 480 |
| OPTIONS | -C | Casters | | | | | + 42 |

KINGSTON FLIP BASE

The Kingston Flip base includes a set of two legs, a heavy tubular steel beam, a single-point release dual lock mechanism, and two hinges. The heavy-duty beam prevents the tabletop from sagging. Save space by nesting tables!



CLSF-2460-C



T-Leg nested tables



Release mechanism

FEATURES

| | |
|-----------------|--|
| UNIT HEIGHT: | 27.75" |
| MOUNTING PLATE: | 5" x 8" x 7/32" |
| CASTERS: | Standard 2" locking casters are included with T-Legs. Arched T-Legs come standard with 3" locking skate wheel casters Both casters have a 112 lbs capacity |
| FINISH: | Stock color is Black (-BL) and Metallic Silver (-MS) |
| PACKAGING: | Bases are packaged 1 set (2 legs) in 1 box and beam in a separate box |

■ KINGSTON FLIP C-LEG & T-LEG BASES PRICING

| LEG TYPE | PART # | BASE SPREAD | RECOMMENDED TOP SIZE | NET WEIGHT | LIST PRICE |
|----------|------------------|-------------|----------------------|------------|------------|
| T-LEG | TLSF-1848 | 16" x 43" | 18" x 48" | 29 lbs | 1,158 |
| | TLSF-1860 | 16" x 55" | 18" x 60" | 31 lbs | 1,178 |
| | TLSF-1872 | 16" x 67" | 16" x 72" | 34 lbs | 1,199 |
| | TLSF-2448 | 22" x 43" | 24" x 48" | 29 lbs | 1,158 |
| | TLSF-2460 | 22" x 55" | 24" x 60" | 33 lbs | 1,178 |
| | TLSF-2472 | 22" x 67" | 24" x 72" | 36 lbs | 1,199 |
| | TLSF-3048 | 26" x 43" | 30" x 48" | 32 lbs | 1,158 |
| | TLSF-3060 | 26" x 55" | 30" x 60" | 34 lbs | 1,178 |
| | TLSF-3072 | 26" x 67" | 30" x 72" | 37 lbs | 1,199 |
| C-LEG | CLSF-1848 | 16" x 43" | 18" x 48" | 29 lbs | 1,158 |
| | CLSF-1860 | 16" x 55" | 18" x 60" | 31 lbs | 1,178 |
| | CLSF-1872 | 16" x 67" | 16" x 72" | 34 lbs | 1,199 |
| | CLSF-2448 | 22" x 43" | 24" x 48" | 29 lbs | 1,158 |
| | CLSF-2460 | 22" x 55" | 24" x 60" | 33 lbs | 1,178 |
| | CLSF-2472 | 22" x 67" | 24" x 72" | 36 lbs | 1,199 |
| | CLSF-3048 | 26" x 43" | 30" x 48" | 32 lbs | 1,158 |
| | CLSF-3060 | 26" x 55" | 30" x 60" | 34 lbs | 1,178 |
| | CLSF-3072 | 26" x 67" | 30" x 72" | 37 lbs | 1,199 |

TRANSFORM-2 BASE

Transform-2 is a versatile contemporary base with straight-on nesting in the flip-top application. Its lightweight material, casters, and one-handed activation allow anyone to flip and move tables quickly. A perforated steel modesty panel is an integral part of the base providing privacy and an elegant look simultaneously. In addition, a continuous heavy-duty beam prevents the top from sagging.



TF2-2460



Release Mechanism



Nested Transform-2 Tables

FEATURES

| | |
|--------------|---|
| STRUCTURE: | 14 gauge 1.5" diameter tubular legs are connected by a modesty panel and a stretcher with the flip-top mechanism. The modesty panel attaches to the legs and extends 14" below the tabletop |
| UNIT HEIGHT: | 28.75" |
| CASTERS: | Black dual-wheel locking 2-1/4" diameter, 112 lb capacity |
| FINISH: | Stock colors are Black (-BL) and Metallic Silver (-MS) |
| PACKAGING: | Each base is packaged in 2 boxes |

TRANSFORM-2 BASE PRICING

| PART # | BASE SPREAD | RECOMMENDED TOP SIZE | NET WEIGHT | LIST PRICE |
|----------|-------------|----------------------|------------|------------|
| TF2-1848 | 17" x 47" | 18" x 48" | 34 lbs | 634 |
| TF2-1860 | 17" x 59" | 18" x 60" | 38 lbs | 687 |
| TF2-1872 | 17" x 71" | 18" x 72" | 42 lbs | 741 |
| TF2-2448 | 19" x 47" | 24" x 48" | 35 lbs | 739 |
| TF2-2460 | 19" x 59" | 24" x 60" | 39 lbs | 794 |
| TF2-2472 | 19" x 71" | 24" x 72" | 43 lbs | 860 |

CASTERS & GLIDES

CASTERS



■ STANDARD CASTER

2" locking dual-wheel hooded casters, nylon.
25 mm x 8mm stem, 112 lbs capacity.

| PART # | LIST PRICE |
|--------|------------|
| C-1 | 21 |



■ LOCKING SKATE WHEEL CASTER

3" in-line skate wheel caster with gray ribbed core.
25mm x 8 mm stem, 112 lbs capacity.

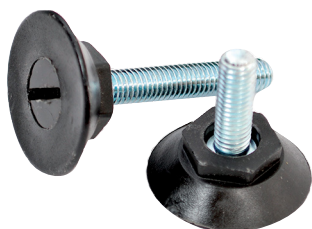
| PART # | LIST PRICE |
|--------|------------|
| SC-1 | 36 |



■ HARD SURFACE CASTER

2" locking dual-wheel hooded caster with soft polyurethane for use on hard surfaces.
22 mm x 8mm stem, 112 lbs capacity.

| PART # | LIST PRICE |
|--------|------------|
| HSC-1 | 29 |



■ ADJUSTABLE LEVELING GLIDE

Metric thread: can be used on most Special-T table bases, 1-3/8" diameter nylon cap; 2" long.

| PART # | LIST PRICE |
|--------|------------|
| ALG-1 | 6 |



■ SELF-LEVELING GLIDE

Automatically stabilizes the table. Easy to install. Requires no adjustment. Automatically adjusts 5/16" on any uneven surface. 1-3/8" diameter nylon cap. SLG-M8 features an 8 mm stem.

| PART # | LIST PRICE |
|--------|------------|
| SLG-1 | 25 |
| SLG-M8 | 25 |

GLIDES

PERFORATED STEEL MODESTY PANELS

Perforated steel modesty panels provide stability, privacy, and style to any table. The panel attaches directly to the work surface with screws. It is fabricated with 18 gauge steel and includes a built-in wire channel for wire management.

FEATURES

- STRUCTURE:** Perforation pattern is 3/16" diameter holes spaced 1-3/4" apart. Cable cutout is 1-1/2" x 3". The 3" x 3" wire channel runs through the bottom of the modesty panel
- PANEL HEIGHT:** 10" H
- ATTACHMENT:** Modesty panel attaches to the top with screws
- FINISH:** Stock color is Black
- PACKAGING:** Packaged 2 per box, priced individually



PERFORATED STEEL MODESTY PANELS PRICING

| PART # | LENGTH | HEIGHT | RECOMMENDED TOP SIZE | # OF CABLE CUTOUTS | CABLE CUTOUT POSITION | NET WEIGHT | LIST PRICE |
|-------------------|--------|--------|----------------------|--------------------|--|------------|------------|
| MP-1030 | 30" | 10" | 30" | 1 | center | 10 lbs | 210 |
| MP-1042SF | 42" | 10" | 42" | 1 | center | 13 lbs | 273 |
| MP-1048SF | 48" | 10" | 48" | 1 | center | 14 lbs | 319 |
| MP-1054SF | 54" | 10" | 54" | 1 | center | 15 lbs | 365 |
| MP-1060SF | 60" | 10" | 60" | 2 | 12" from each end | 16 lbs | 384 |
| MP-1066SF | 66" | 10" | 66" | 2 | 12" from each end | 20 lbs | 429 |
| MP-1072SF | 72" | 10" | 72" | 2 | 12" from each end | 22 lbs | 469 |
| MP-1084SF | 84" | 10" | 84" | 3 | 1 in the center 2 12" from each end | 25 lbs | 541 |
| MP-1096SF* | 96" | 10" | 96" | 3 | 1 in the center 2 12" from each end | 29 lbs | 568 |

*An Oversize Fee has been implemented by freight carriers for all LTL shipments for pallets 8' and over.
96"-108" - additional \$250.00 | 109"-168" - additional \$350.00 | Per custom pallet

FROSTED ACRYLIC MODESTY PANELS AND PRIVACY SCREENS

Frosted Acrylic Privacy Screens and Modesty panels provide an attractive and durable option to traditional acrylic products. The superiority of Frosted Acrylic is in its excellent light diffusion, rigidity, and smudge-resistant surface. It is truly a high-quality product designed for years of performance.

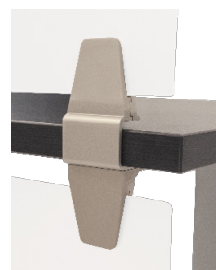
FEATURES

PANELS

| | |
|------------|--|
| STRUCTURE: | Scratch and smudge resistant with smooth edges and corners |
| COLOR: | Frosted White |
| SIZE: | 14" H x 47" L, 59" L, 71" L ; 3/8" thick |

BRACKETS

| | |
|------------|---|
| MATERIAL: | Extruded aluminum |
| STRUCTURE: | Durable, permanent attachment with 2 screws per bracket underneath the table for a seamless look when used in combination with the privacy screens and modesty panels. Compatible with 1" - 1.25" tabletops |
| 2 BRACKETS | Are included for 47" and 59" panels |
| 3 BRACKETS | Are included for 71" panels |



FROSTED ACRYLIC MODESTY PANELS AND PRIVACY SCREENS PRICING

| TYPE | PART # | SIZE | RECOMMENDED TOP SIZE | NET WEIGHT | LIST PRICE |
|----------------|---------------|-----------|----------------------|------------|------------|
| MODESTY PANEL | AP-1248-MP | 12" x 47" | 48" L | 5 lbs | 485 |
| | AP-1260-MP | 12" x 59" | 60" L | 6 lbs | 565 |
| | AP-1272-MP | 12" x 71" | 72" L | 7 lbs | 647 |
| PRIVACY SCREEN | AP-1448-PS-BR | 14" x 47" | 48" L | 5 lbs | 420 |
| | AP-1460-PS-BR | 14" x 59" | 60" L | 6 lbs | 491 |
| | AP-1472-PS-BR | 14" x 71" | 72" L | 7 lbs | 561 |

LAMINATE MODESTY PANELS

Laminate modesty panels can match the tabletop or make a statement with a different color laminate.

■ FEATURES

| | |
|-------------|--|
| PANEL SIZE: | 3/4" thick, 10" high and 1/4" shorter than the top length |
| ATTACHMENT: | Permanently attaches directly to the table Mounting brackets are included |
| COLORS: | Any standard WilsonArt or Formica laminate on both sides |
| EDGE: | PVC |



■ LAMINATE MODESTY PANELS PRICING

| PART # | LENGTH | RECOMMENDED TOP LENGTH | NET WEIGHT | LIST PRICE |
|-----------|--------|------------------------|------------|------------|
| MPL-1036 | 35.75" | 36" | 7 lbs | 250 |
| MPL-1042 | 41.75" | 42" | 8 lbs | 268 |
| MPL-1048 | 47.75" | 48" | 9 lbs | 281 |
| MPL-1054 | 53.75" | 54" | 10 lbs | 297 |
| MPL-1060 | 59.75" | 60" | 11 lbs | 299 |
| MPL-1066 | 65.75" | 66" | 12 lbs | 324 |
| MPL-1072 | 71.75" | 72" | 13 lbs | 381 |
| MPL-1078 | 77.75" | 78" | 15 lbs | 393 |
| MPL-1084 | 83.75" | 84" | 16 lbs | 447 |
| MPL-1096* | 95.75" | 96" | 18 lbs | 511 |

*An Oversize Fee has been implemented by freight carriers for all LTL shipments for pallets 8' and over.
96"-108" - additional \$250.00 | 109" -168" - additional \$350.00 | Per custom pallet

POWER & DATA

BURELE™



Burele brings customizability to a new level. That's why it lives up here on the work surface, where work gets done. It offers blended power options, including USB ports for phones, tablets, and more. Personalize its sleek, high-gloss plastic finish with color, artwork, and messaging.

OPTIONS

- 2 Power, QuickShip in Black or White

DESCRIPTION

- Colors: Black or White
- Removable above surface mount
- 72" plug power cord

CUSTOM FEATURES - CONTACT CUSTOMER SERVICE

- More finish options
- 120" plug power cord



■ BURELE™ PRICING

| PART # | COLOR | CONFIGURATION | LIST PRICE |
|-------------------------|-------|------------------------|------------|
| BURELE-2P-72-B | Black | 2 Power | 184 |
| BURELE-1P1U-72-B | Black | 1 Power / 1 USB Duplex | 262 |
| BURELE-2P-72-W | White | 2 Power | 184 |
| BURELE-1P1U-72-W | White | 1 Power / 1 USB Duplex | 262 |

EZ POWER

The EZ Power can easily integrate into existing worksurfaces with a simple clamp-on attachment. For example, a convenient tablet or phone holder is built into a clamp mount to keep your desk organized. In addition, 3-power outlets and 1-USB duplex provide the flexibility to maintain all devices well charged.

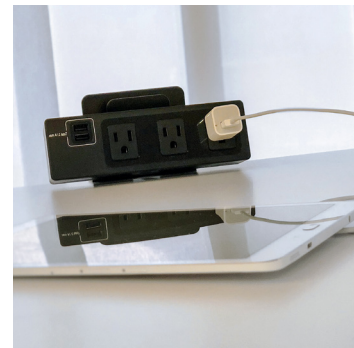


DESCRIPTION

- 3 AC 15 Amp receptacle and 3.1 Amp combined USB duplex
- 96" plug power cord
- Surge protection up to 510 Joules
- Colors: Black or White
- Removable above the surface mount
- QuickShip

OPTIONS

- 3 Power / 1 USB Duplex



EZ POWER PRICING

| PART # | COLOR | CONFIGURATION | LIST PRICE |
|-----------------------|-------|------------------------|------------|
| EZPOWER-3P1U-B | Black | 3 Power / 1 USB Duplex | 208 |
| EZPOWER-3P1U-W | White | 3 Power / 1 USB Duplex | 208 |

WIRE MANAGEMENT

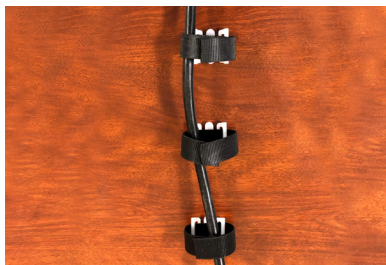
HORIZONTAL WIRE MANAGEMENT



■ LOOP CLIPS

Package of 4 wire management clips with screws.

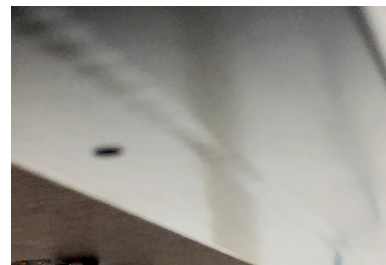
| PART # | LIST PRICE |
|--------------------|------------|
| WM-LOOPCLIP | 7 |



■ VELCRO LOOP

Package of 4 Velcro hook & loop wire management clips.

| PART # | LIST PRICE |
|------------------|------------|
| WM-VELCRO | 16 |



■ CABLE GRIP

Grip wire manager that holds 5 cords.

| PART # | LIST PRICE |
|----------------------|------------|
| WM-CABLE-GRIP | 19 |



■ J-SHAPE WIRE CHANNEL

J-shape wire management channel with double-sided adhesive tape to be fastened under a desk/work surface to keep cables up and out of the way. Available in 4, 5, and 6-foot lengths. 4-5/16" overall flange, 1-3/32" deep, with a serrated finish. The trough is 2-9/16" high. The stock color is Black.

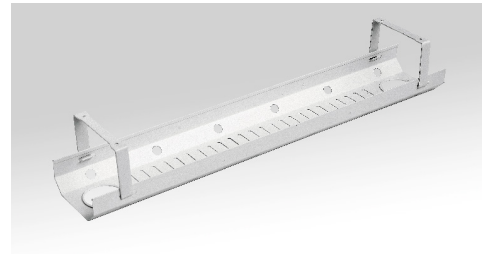
| PART # | LIST PRICE |
|--------------|------------|
| JWM-4 | 55 |
| JWM-5 | 69 |
| JWM-6 | 81 |



■ LOCKING WIRE CHANNEL

Black 32" plastic latching wire manager.

| PART # | LIST PRICE |
|------------------------|------------|
| WM-SNAP-CHANNEL | 21 |



■ WIRE TROUGH

27.6" metal wire trough management unit, available in black and silver.

| PART # | COLOR | LIST PRICE |
|---------------------|-----------------|------------|
| WM-TROUGH-B | Black | 39 |
| WM-TROUGH-MS | Metallic Silver | 39 |

■ WIRE TRAY

20" wire management tray available in black or silver.



| PART # | COLOR | LIST PRICE |
|----------------------|-----------------|------------|
| WM-TRAY-20-B | Black | 31 |
| WM-TRAY-20-MS | Metallic Silver | 31 |

VERTICAL WIRE MANAGEMENT



■ LEG CLIP

2" wide leg clip wire manager available in black and silver.

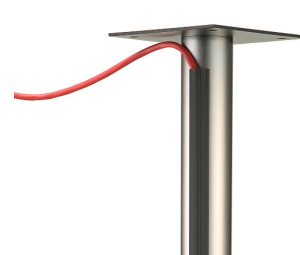
| PART # | COLOR | LIST PRICE |
|-----------------------|-----------------|------------|
| WM-LEGCLIP2-B | Black | 19 |
| WM-LEGCLIP2-MS | Metallic Silver | 19 |



■ MAGNETIC CHANNEL

2" wide magnetic wire manager available in black and silver.

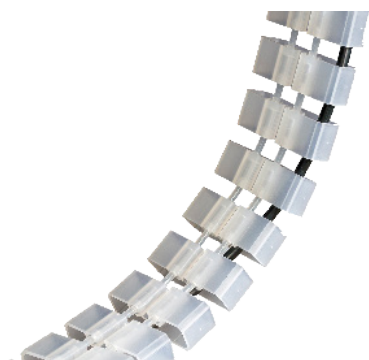
| PART # | COLOR | LIST PRICE |
|--------------------------|-----------------|------------|
| WM-MAG-CHANNEL-B | Black | 110 |
| WM-MAG-CHANNEL-MS | Metallic Silver | 110 |



■ 1" WIRE CHANNEL

Adhesive vertical table leg wire manager, 24" long, available in black and gray

| PART # | COLOR | LIST PRICE |
|-----------------|-------|------------|
| WM-24-B | Black | 70 |
| WM-24-GR | Gray | 70 |



■ ADJUSTABLE SPINE

51" spine wire management conceals and carries wires from under the desk to the floor.

It screws under the desk and comes with a weighted base.

| PART # | LIST PRICE |
|--------------------|------------|
| WM-SPINE-TR | 256 |



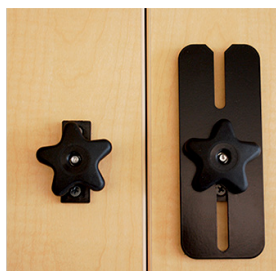
■ METAL SNAP-ON

Features an easy snap-on installation that allows for repositioning. Two options for 2" and 3" columns with a capacity for multiple power and data cables. 17-3/4" length; available in Black (-BL) and Metallic Silver (-MS) finish.

| PART # | LIST PRICE |
|-------------------------------|------------|
| SNAP-WM for 2" column | 91 |
| SNAP-WM3 for 3" column | 91 |

TABLE CONNECTORS & TOP SUPPORT

TABLE CONNECTORS



■ QUICK ALIGN TABLE CONNECTOR

Connect two or more tables and add flexibility to any space. 6-1/4" x 2-1/2" steel plate, 2 plastic knobs.

| PART # | LIST PRICE |
|---------------------|------------|
| QA | 84 |
| FLEKSSIT-KIT | 65 |

TOP SUPPORT

■ STEEL TOP SUPPORT



10 gauge channel, includes screws. Available in 42" or 54" lengths. Steel top support for Best Value tops and height adjustable bases for 60" and 72" tops.

| PART # | LIST PRICE |
|-------------------|------------|
| STS-42 | 81 |
| STS-54 | 92 |
| 1DT-STS-60 | 74 |
| 1DT-STS-72 | 82 |

BEST VALUE - TOPS

Best Value tops feature a durable thermo-fused material for office and restaurant use with several color options and edges. In addition, all tops 60" or longer include a steel top support to prevent the top from sagging.

FEATURES

- STRUCTURE: 1" thick top; 45" density particle board core
- LAMINATE: 4 low pressure laminate colors with matching PVC edge
- PACKAGING: Tops are packaged individually



ONE DAY QUICK SHIP TABLETOPS COLOR OPTIONS



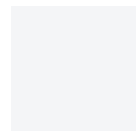
GRAY
DRIFTWOOD
(DR)



WALNUT
(WA)



GRAY
(G)



WHITE
(W)

BEST VALUE TOPS WITH MATCHING EDGES PRICING**

| TABLE SHAPE | PART # | SIZE | NET WEIGHT | LIST PRICE |
|-------------|---------|-----------|------------|------------|
| RECTANGLE | BV-1860 | 18" x 60" | 38 lbs | 452 |
| | BV-1872 | 18" x 72" | 45 lbs | 512 |
| | BV-2448 | 24" x 48" | 40 lbs | 426 |
| | BV-2460 | 24" x 60" | 50 lbs | 467 |
| | BV-2472 | 24" x 72" | 60 lbs | 549 |
| | BV-3060 | 30" x 60" | 63 lbs | 549 |
| | BV-3072 | 30" x 72" | 75 lbs | 604 |
| SQUARE | BV-3636 | 36" x 36" | 45 lbs | 474 |
| | BV-4242 | 42" x 42" | 62 lbs | 563 |
| ROUND | BV-36R | 36" | 45 lbs | 510 |
| | BV-42R | 42" | 62 lbs | 593 |

**Specify code for color

METAL FINISH COLORS

QUICK SHIP STOCK COLORS

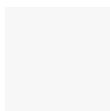


METALLIC
SILVER



BLACK

POWDER COAT COLORS



GLOSSY
WHITE



MEDIUM
TONE



HW
PLATINUM



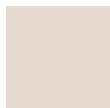
SMOKE



GRAPHITE



BLACK
WRINKLE



IVORY



PISTACHIO



EVERGREEN



POWDER
BLUE



AUBURN



NATURAL



METALLIC
GOLD

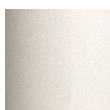


COOL
GRAY



RUBY

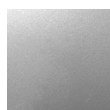
METALLIC POWDER COAT COLORS



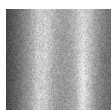
METALLIC
SAND



GUN METAL



METALLIC
PLATINUM

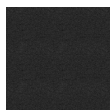


STEEL
SILVER

NON-POWDER COAT COLORS



STAINLESS
STEEL*



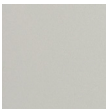
BLACK
WRINKLE

NON-STOCK FINISHES LEAD TIME: 10 - 15 BUSINESS DAYS.
Metal finishes vary by base style | Additional charges may apply
Images are representative of the material and may not be an exact match

* Only available for Cast Iron-2 Series ** Not available in powder coat finishes

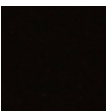
PATRIOT METAL FINISH COLOR OPTIONS

PATRIOT QUICK SHIP STOCK COLOR

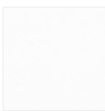


**METALLIC
SILVER**
[MS]
METALLIC
SEMI-
GLOSS

PATRIOT METAL COLORS



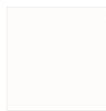
BLACK
[B07]
MATTE



**DESIGNER
WHITE**
[405]
MATTE



**SOFT
WHITE**
[LU]
MATTE



WHITE
[91]
MATTE



**ANODIZED
SILVER** | S09



**STARLIGHT
SILVER**
[S15]
METALLIC
SEMI-
GLOSS



**WARM
NEUTRAL
GRAY**
[WN]
MATTE



**TAUPE
METALLIC**
[504]
METALLIC
SEMI-
GLOSS



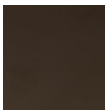
**MEDIUM
TONE**
[MT]
MATTE



**METALLIC
BRONZE**
[EH]
METALLIC
SEMI-
GLOSS



CLEAR
[CC05]
MATTE



**SATIN
BRONZE**
[SB]
MATTE



**ANTHRA-
CITE GRAY**
[7016]
GLOSS



GRAPHITE
[G2]
MATTE



**CARBON
METALLIC**
[514]
METALLIC
SEMI-
GLOSS



**BUMPER
BLACK**
[B05]
GLOSS



**COPPER
TOP**
[1023]
SEMI-
GLOSS



ORANGE
[OR01]
GLOSS



RED
[R02]
GLOSS



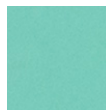
**MOSS
GREEN**
[G01]
GLOSS



**SIGNAL
GREEN**
[6032]
GLOSS



**SERPO
GREEN**
[G03]
GLOSS



**LIGHT
GREEN**
[6027]
GLOSS



**SKY
BLUE**
[TR1J]
MATTE

NON-STOCK FINISHES LEAD TIME: 10 - 15 BUSINESS DAYS.
Metal finishes for Patriot style bases
Images are representative of the material and may not be an exact match



IMPORTANT INFORMATION

CONVENIENT PAYMENT OPTIONS

Faxed check, Visa, MasterCard, American Express, and Discover

Special-T is an ISO 9000/9001 certified manufacturer; our products meet or exceed all relevant ANSI/BIFMA standards. We are committed to the highest degree of quality and craftsmanship. Our Quality Management System is designed to guarantee the highest price-quality ratio.

TERMS

Upon credit approval, terms are net 30-days from the date of invoice. Before approved credit, payment must be received before shipping. We accept Visa, Master Card, Discover, and American Express. When you provide a faxed or mailed check, you authorize us to use information from your check to make one-time electronic funds transfer from your account or process this transaction as a check. All custom orders require a 50% deposit. COD payment method is not accepted.

LEAD-TIMES

Lead-time for all products in the stocked finish is 24 hours after the order is confirmed. Non-stocked finishes, lead-time is 10-15 business days. Please contact the Special-T Customer Service Department at (888) 705-0777 to check availability. Can expedite specific orders for an additional 10% Expedited Order Fee.

ACKNOWLEDGMENT OF ORDERS

All orders are entered, manufactured, and shipped according to the acknowledgment. Notify Special-T immediately of any discrepancy.

PRICES

All prices are subject to change without notice.

CANCELLATION POLICY

Custom orders are not subject to cancellation.

SHIPMENT INFORMATION

Orders will ship via UPS or a common LTL carrier, whichever is the least expensive. Orders may ship collect on a designated alternative LTL carrier. Special and international shipping arrangements will be made as necessary and noted on the original Purchase Order. All orders are shipped FOB our warehouse. We do not ship COD. The buyer accepts legal responsibility for the merchandise when shipped. Upon receipt, please inspect the shipment thoroughly for visible and possible concealed damage. If a package is lost or damage is discovered, the responsible receiving party should note this with the carrier and file a claim immediately.



WARRANTY & RETURN

WARRANTY

May 15, 2020

To expedite your warranty claims quickly and accurately, go to specialt.net/claims and fill out the Warranty/Freight claim form. All claims must reference the original Purchase Order number and Special-T Sales Order or Invoice number.

Customer Service:



888.705.0777



customerservice@specialt.net

CONTACT INFORMATION

Warranty:



888.705.0777



warranty@specialt.net

Patriot Electric and Liberty Electric Height Adjustable Tables and Bases are warranted to the original purchaser for 10 years from the date of delivery, under normal use for one 8-hour shift per day against manufacturing defects. We will repair or replace, at our discretion, any products that we determine to be defective as a result of faulty workmanship. In no event shall our liability under this warranty exceed the original purchase price of the product determined to be defective. This warranty does not apply where the product has been abused, mishandled, or subjected to use other than that for which it was designed. For purposes of this warranty, normal wear to the product finish shall not be considered a defect.

Table Bases Only. Bases are warranted to the original purchaser for 10 years from the date of delivery, under normal use, against manufacturing defects. We will repair or replace, at our discretion, any products that we determine to be defective as a result of faulty workmanship. In no event shall liability under this warranty exceed the original purchase price of the product determined to be defective. This warranty does not apply where the product has been abused, mishandled, or subjected to use other than that for which it was designed, including excessive weight and top size limitations. This warranty does not apply to normal wear and tear or damage caused by accident, neglect, misuse, or improper installation or operation. There are no other warranties expressed or implied.

Tabletops Only. Tabletops purchased separately are warranted for one (1) year from the original invoice date against poor workmanship and manufacturing defects. We retain the right to replace or repair at our discretion any products or parts thereof which are found defective in materials or workmanship. This warranty becomes invalid for products engineered by the client, whereas the construction method and material specifications of final product assembly adversely affect materials and workmanship. In no event, shall liability under this warranty exceed the original purchase price. This warranty becomes invalid if the product or parts exhibits abuse or improper or unusual use. This warranty is invalid if the product is subject to caustic or abrasive cleaning agents or sharp objects that cause damage. This warranty is invalid if the product is altered from its original condition or the client performs additional processing on the product that results in any alteration from its original condition. This warranty does not cover self-edge tops and/or tops where table legs/bases are more than 60" apart and do not include steel top support. Our tables and tabletops are not for outdoor use. Any damage related to outdoor use is not covered under this warranty. This warranty does not apply to normal wear and tear or damage caused by accident, neglect, misuse, or improper installation or operation. This warranty is expressly made in lieu of any and all other warranties expressed or implied.



WARRANTY & RETURN

WARRANTY

May 15, 2020

CONTACT INFORMATION

Customer Service:



888.705.0777



customerservice@specialt.net

Warranty:



888.705.0777



warranty@specialt.net

Power & Data: All Power and Data components are warranted for 1 year from the date of the original invoice against poor workmanship and manufacturing defects. This warranty becomes invalid for products engineered by the client, whereas the construction method, material specifications of final product assembly adversely affect materials and or workmanship. In no event, shall liability under this warranty exceed the original purchase price. This warranty does not apply to normal wear and tear or damage caused by accident, neglect, misuse, or improper installation or operation.

Monitor Arms are warranted to the original purchaser for 10 years from the delivery date, under normal use for one, 8-hour shift per day, against manufacturing defects. We will repair or replace, at our discretion, any products that we determine to be defective as a result of faulty workmanship. In no event shall our liability under this warranty exceed the original purchase price of the product determined to be defective. This warranty does not apply where the product has been abused, mishandled, or subjected to use other than that for which it was designed. This warranty does not apply to normal wear and tear or damage caused by accident, neglect, misuse, or improper installation or operation.

Chairs: Special-T warrants to the original purchaser of the product and from the original date of sale the following: Lifetime Warranty to the original end-user; the company will repair or replace, at its option, factory defective structural and mechanical parts with a comparable product without charge. This warranty is for a single shift, standard commercial usage, defined as a standard 8-hour workday, five days a week. Weight limitation varies by product. Upholstery fabric and foam are warranted against wear through and deterioration during normal usage for five (5) years. COM and COL are not warranted.

Wellness and Privacy Screens: Clear Plexiglas, Frosted Acrylic, and PET Wellness and Privacy Screens are warranted for 10 years from the date of delivery against defects in materials or workmanship, subject to the limitations exclusions and other provisions detailed below. This limited warranty only applies to the original purchaser. The limited warranty is terminated upon transfer, sale, or modification of the product. In no event, shall liability under this warranty exceed the original purchase price. This warranty does not apply to normal wear and tear or damage caused by accident, neglect, abuse, misuse, vandalism, disaster, improper storage, improper cleaning, chemical damage, improper installation, operation, environmental factors, or discoloration due to sunlight or indoor lighting. This warranty does not apply to changes in surface finish due to aging or prolonged exposure to fluids or sun. In the event of repair and/or replacement of any defective product, Special-T does not warrant matching color, texture, or dye lots except within commercially reasonable standards. This warranty is expressly made in lieu of any and all other warranties expressed or implied.

Labor Warranty is subject to written approval. It does not cover labor costs associated with concealed freight damage.



WARRANTY & RETURN

RETURN POLICY

The Return of any merchandise to the Special-T, LLC, warehouse must be authorized prior to shipment.

- All returns must be accompanied by a Return Merchandise Authorization Form (RMA). The RMA must be requested within thirty (30) days of the original invoice date. Please contact Customer Service at 888.705.0777, Monday to Friday, 8:00 AM to 5:00 PM EST. Upon approval of the return, send the prepaid shipment to 11820 Wills Road, Suite 140, Alpharetta, GA 30009-0256.
- Tops - 30% restocking fee will apply if received in new condition
- Bases - 25% restocking fee will apply if received in new condition
- Products must be in new condition and in their original carton
- The following items are non-returnable and non-refundable:
 - Custom table tops
 - Power and data units
 - Closeout tables and bases
 - Custom metal paint and Black Wrinkle finish
 - Metal bases with irreversible alterations

Customer Service:



888.705.0777



customerservice@specialt.net

CONTACT INFORMATION

Warranty:



888.705.0777



warranty@specialt.net



TABLES, BASES & ACCESSORIES



11820 Wills Rd, Suite 140,
Alpharetta, GA 30009
888.705.0777

www.SpecialT.net